

CITIZENS ADVISORY COMMITTEE



Lynbrook Supplemental School Assignment Plan (LSSAP) and Enrollment Update

12-19-17



CAC OBJECTIVE for FALL MEETING

To determine a recommendation
for the Board for the
2018-19 school year
in regards to
Lynbrook High School enrollment



SUMMARY OF APPLICANTS & TRANSFERS

LSSAP Applicants, Confirmations & Enrolled as of 11-1-17

By LSSAP Category	Hyde Area	Attended Miller	Attended McAuliffe	Total
Applied	64	35	2	101
Declined*	11	0	0	11
Confirmed	53	35	2	90

By LSSAP Category	Hyde Area	Attended Miller	Attended McAuliffe	Total
Trans. Out	5	1	0	6
Enrolled @ LHS	48	34	2	84

**Declined*= parents declined the transfer confirmation which was the final step before transfers were accepted into LHS.



SUMMARY OF APPLICANTS & TRANSFERS

LSSAP Applicants, Confirmations & Enrolled as of 11-1-17

By Resident High School	CHS	FHS	HHS	MHS	Total
Applied	89	3	1	8	101
Declined*	11	0	0	0	11
Confirmed	78	3	1	8	90

By Resident High School	CHS	FHS	HHS	MHS	Total
Trans. Out	6	0	0	0	6
Enrolled @ LHS	72	3	1	8	84



STUDENT SUCCESS

Outcome of the Lynbrook Supplemental School Assignment Plan (LSSAP) for the 2017-18 school year

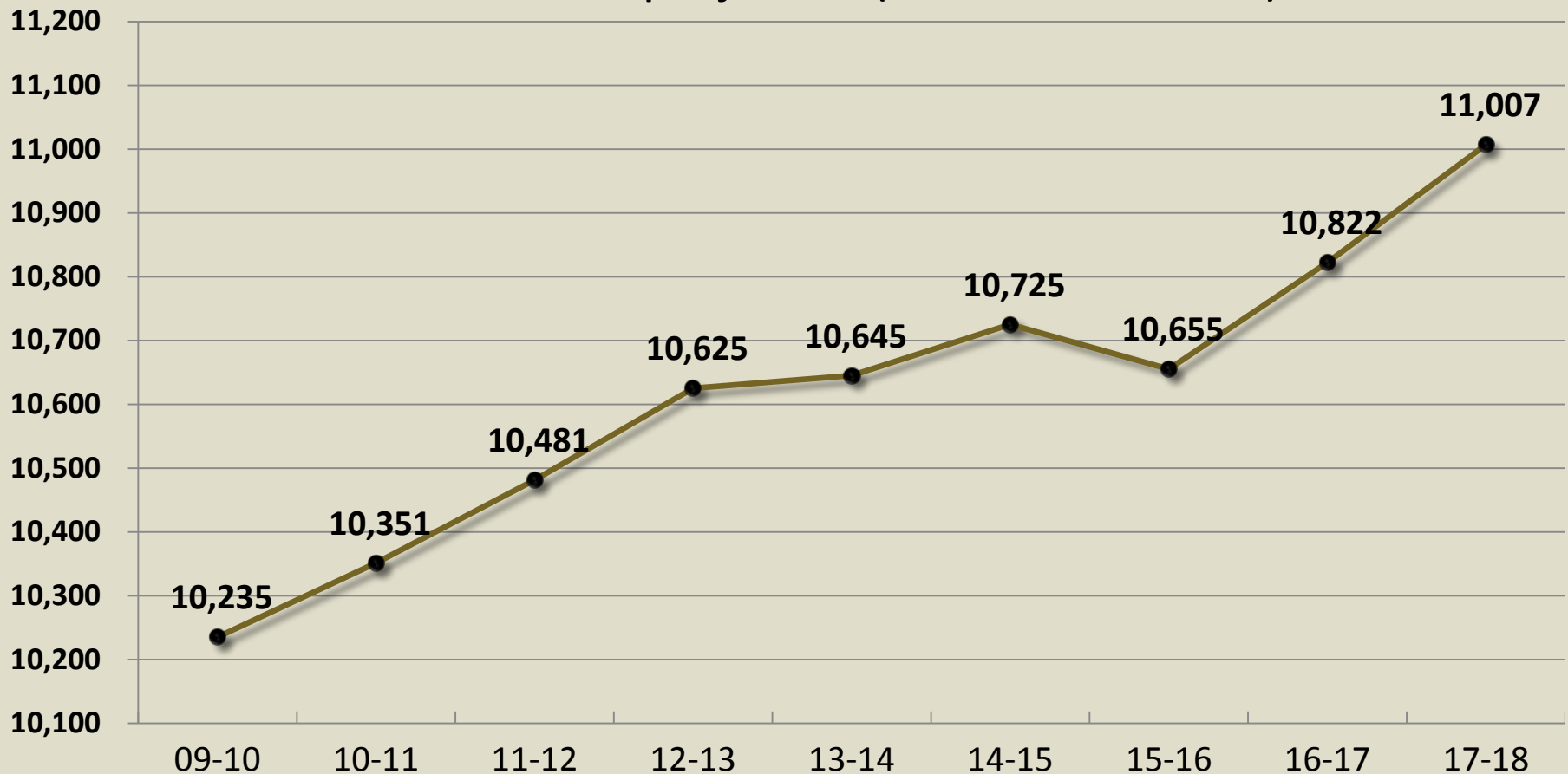
- Cupertino High School: Principal Kami Tomberlain
- Lynbrook High School: Principal Maria Jackson



DISTRICT ATTENDING ENROLLMENT*

As of 10-20-17, District attending enrollment was **11,007** (Gr. 9-12)

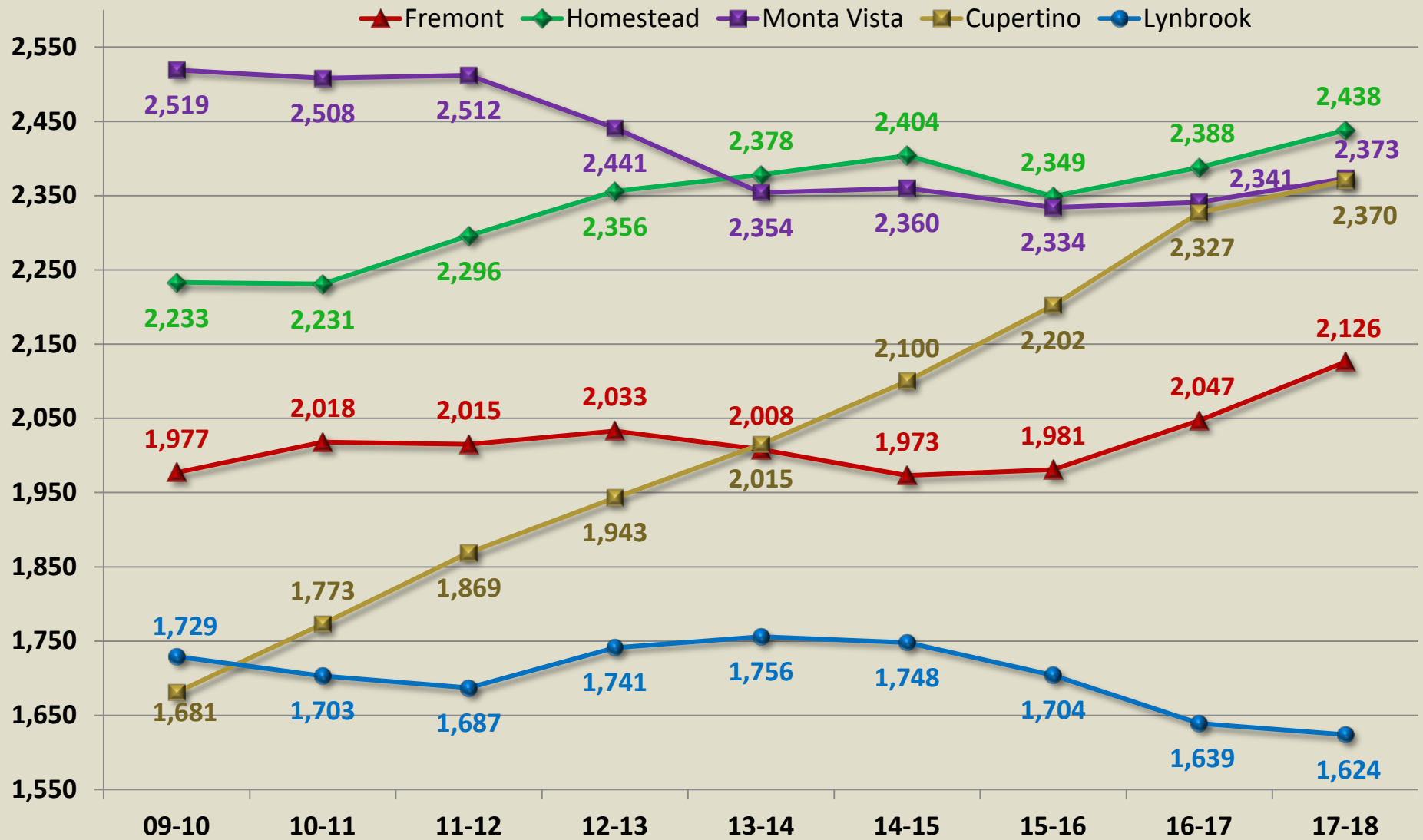
- This was **an increase of 185** students from 2016-17
- This was **29 less** than projected (99.73% Accurate)



*Does not include Non Public School students, but **does include** 7 Community Day students



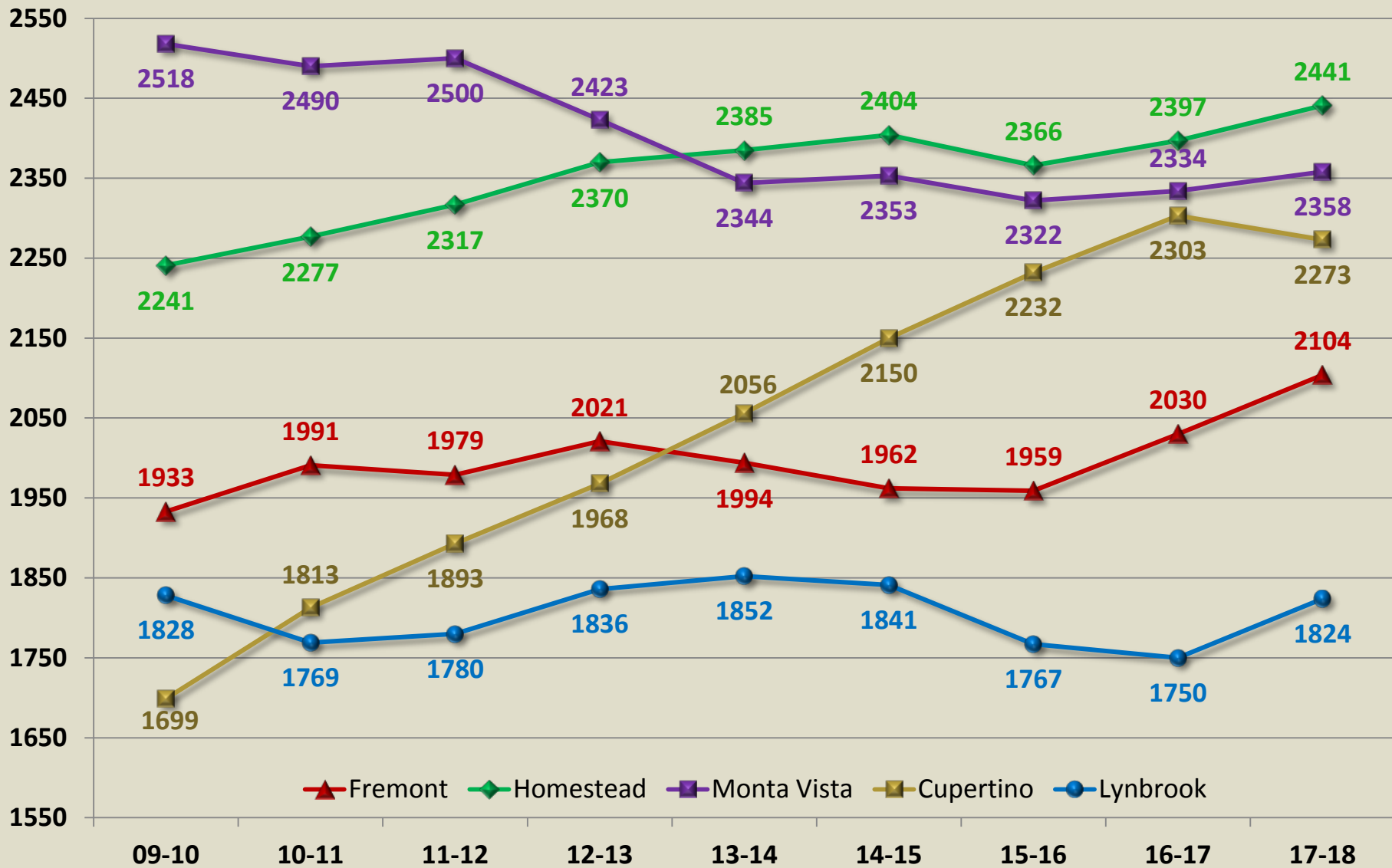
SCHOOL RESIDENT ENROLLMENT*



*Includes Non Public School Enrollments, but not transfers from other Districts



SCHOOL ATTENDING ENROLLMENT*

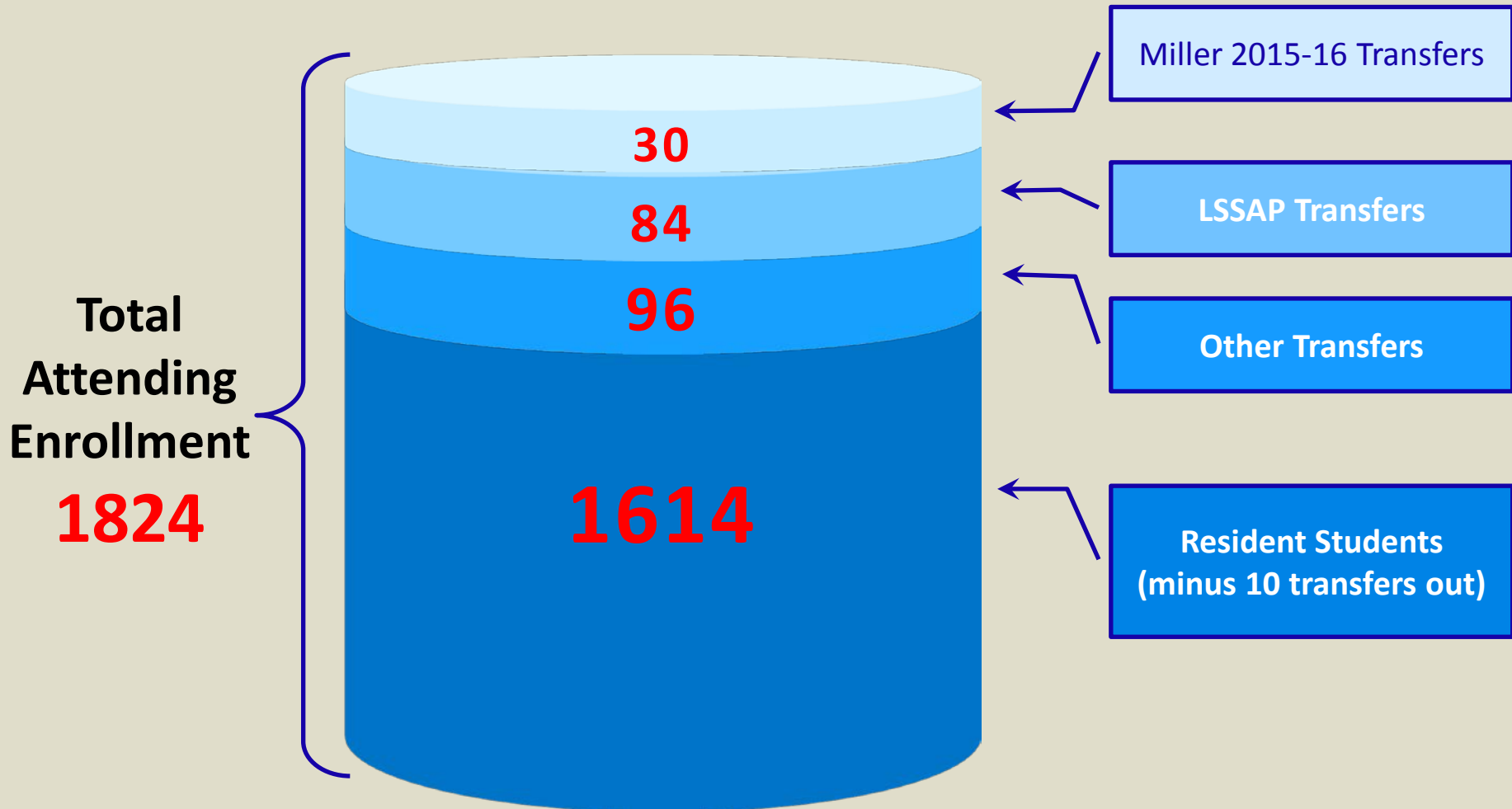


*Does not include Non Public School Enrollments



LYNBROOK ATTENDING ENROLLMENT

Breakdown of Lynbrook High School's total Attending Enrollment as of October 20, 2017.





LYNBROOK 3-YEAR TRANSFER HISTORY

Intra Dist.	15-16	16-17	17-18
LSSAP	0	0	84
Miller	0	31	30
Spec. Ed.	47	39	44
Sr. Priv.	2	7	1
Open Enr.	1	1	1
PAC	8	2	5
Other	15	20	20
Medical	2	0	0
Total Intra	75	100	185

Inter Dist.	15-16	16-17	17-18
Emp. Priv.	17	18	20
Sr. Priv.	11	6	4
Other	2	0	1
Total Inter	30	24	25

All Trans.	15-16	16-17	17-18
Total	105	124	210

Note:

If the LSSAP and Miller Transfers are deducted, the Total Intra District transfers are as follows:

15-16 = **75**

16-17 = **69**

17-18 = **71**

Key:

PAC = Placement Advisory Committee
This committee makes placement decisions for students based on compelling needs.

Other = Primarily English Language Learners and other special circumstances as approved by the District.



ENROLLMENT - ATTENDING & RESIDENT

2017-18 ENROLLMENT WITH NET TRANSFERS AS OF 10-20-17

CHS	9	10	11	12	Tot.
<i>Attending</i>	540	562	614	557	2,273
<i>Resident</i>	614	597	618	541	2,370
Net Trans.	-74	-35	-4	16	-97

FHS	9	10	11	12	Tot.
<i>Attending</i>	588	510	494	512	2,104
<i>Resident</i>	588	521	498	519	2,126
Net Trans.	0	-11	-4	-7	-22

HHS	9	10	11	12	Tot.
<i>Attending</i>	617	620	601	603	2,441
<i>Resident</i>	619	621	598	600	2,438
Net Trans.	-2	-1	3	3	3

MVHS	9	10	11	12	Tot.
<i>Attending</i>	610	575	575	598	2,358
<i>Resident</i>	618	578	585	592	2,373
Net Trans.	-8	-3	-10	6	-15

LHS	9	10	11	12	Tot.
<i>Attending</i>	529	443	391	461	1,824
<i>Resident</i>	434	389	373	428	1,624
Net Trans.	101	57	18	33	200

*Resident Enrollment includes Non Public School Enrollments



ENROLLMENT - PROJECTED & ACTUAL*

2017-18 RESIDENT ENROLLMENT – PROJECTED & ACTUAL

<i>CHS</i>	9	10	11	12	<i>Tot.</i>
<i>Projected</i>	574	607	615	555	2,351
<i>Actual</i>	614	597	618	541	2,370
<i>Difference</i>	40	-10	3	-14	19

<i>FHS</i>	9	10	11	12	<i>Tot.</i>
<i>Projected</i>	564	542	508	526	2,140
<i>Actual</i>	588	521	498	519	2,126
<i>Difference</i>	24	-21	-10	-7	-14

<i>HHS</i>	9	10	11	12	<i>Tot.</i>
<i>Projected</i>	631	617	598	590	2,436
<i>Actual</i>	619	621	598	600	2,438
<i>Difference</i>	-12	4	0	10	2

<i>MVHS</i>	9	10	11	12	<i>Tot.</i>
<i>Projected</i>	638	605	590	595	2,428
<i>Actual</i>	618	578	585	592	2,373
<i>Difference</i>	-20	-27	-5	-3	-55

<i>LHS</i>	9	10	11	12	<i>Tot.</i>
<i>Projected</i>	399	393	373	434	1,599
<i>Actual</i>	434	389	373	428	1,624
<i>Difference</i>	35	-4	0	-6	25

*Does not include Non Public School or Community Day Enrollments



ENROLLMENT - PROJECTED & ACTUAL*

2017-18 ATTENDING ENROLLMENT – PROJECTED & ACTUAL

<i>CHS</i>	9	10	11	12	<i>Tot.</i>
<i>Projected</i>	506	579	610	565	2,260
<i>Actual</i>	540	562	614	557	2,273
<i>Difference</i>	34	-17	4	-8	13

<i>FHS</i>	9	10	11	12	<i>Tot.</i>
<i>Projected</i>	556	537	505	522	2,120
<i>Actual</i>	588	510	494	512	2,104
<i>Difference</i>	32	-27	-11	-10	-16

<i>HHS</i>	9	10	11	12	<i>Tot.</i>
<i>Projected</i>	627	614	597	601	2,439
<i>Actual</i>	617	620	601	603	2,441
<i>Difference</i>	-10	6	4	2	2

<i>MVHS</i>	9	10	11	12	<i>Tot.</i>
<i>Projected</i>	627	602	586	599	2,414
<i>Actual</i>	610	575	575	598	2,358
<i>Difference</i>	-17	-27	-11	-1	-56

<i>LHS</i>	9	10	11	12	<i>Tot.</i>
<i>Projected</i>	502	441	391	462	1,796
<i>Actual</i>	529	443	391	461	1,824
<i>Difference</i>	27	2	0	-1	28

*Does not include Non Public School or Community Day Enrollments

Projected Enrollments

2017 to 2023

*December 19, 2017, FUHSD CAC
Meeting*

Table 1 (PowerPoint version): Actual and Projected Total October Enrollments, 2017 to 2023
(with highlighting and boxing of groups of relatively small and large totals specific to the grades the students are in)

Early Oct. of	Total Projected Enrollment by Grade in the Sunnyvale and Cupertino Union Elementary School Districts											Total Projected Enrollment by Grade in Fremont UHSD				FUHSD (9-12) Total
	TK	K	1	2	3	4	5	6	7	8	9	10	11	12		
2017	396	2,514	2,629	2,691	2,584	2,786	2,712	2,710	2,787	2,757	2,888	2,725	2,691	2,738	11,042	
2018	391	2,481	2,640	2,670	2,654	2,523	2,692	2,626	2,684	2,756	2,748	2,886	2,711	2,686	11,031	
2019	390	2,477	2,606	2,668	2,629	2,587	2,431	2,600	2,599	2,651	2,747	2,746	2,868	2,705	11,066	
2020	382	2,421	2,615	2,658	2,635	2,576	2,499	2,355	2,581	2,572	2,655	2,748	2,734	2,870	11,007	
2021	389	2,466	2,565	2,677	2,639	2,584	2,494	2,430	2,346	2,561	2,559	2,663	2,744	2,742	10,708	
2022	396	2,513	2,618	2,629	2,662	2,597	2,497	2,425	2,423	2,334	2,559	2,570	2,666	2,754	10,549	
2023	398	2,524	2,655	2,671	2,604	2,610	2,510	2,425	2,417	2,404	2,342	2,564	2,563	2,672	10,141	

Total Fremont UHSD Enrollment Change in One Year, to October 2018	-11
Total Fremont UHSD Enrollment Change in Two Years, to October 2019	24
Total Fremont UHSD Enrollment Change in Three Years, to October 2020	-35
Total Fremont UHSD Enrollment Change in Four Years, to October 2021	-334
Total Fremont UHSD Enrollment Change in Five Years, to October 2022	-493
Total Fremont UHSD Enrollment Change in Six Years, to October 2023	-901

<i>Real Potential Lower FUHSD Total in 2018 (essentially -0.8%)</i>	10,940
<i>Real Potential Higher FUHSD Total in 2018 (essentially +0.8%)</i>	11,120
<i>Real Potential Lower FUHSD Total in 2023 (essentially -5%)</i>	9,650
<i>Real Potential Higher FUHSD Total in 2023 (essentially +5%)</i>	10,650

Projected FUHSD students from additional new housing through 2023	73	69	67	64	273
---	----	----	----	----	-----

Table 2 (PowerPoint version)
Actual Resident and Attendance Figures and Projected Resident Students by Attendance Area

School	Actual Resident and Enrollment part				Projected Resident Student Population part					
	Actual Res. Difference from Oct. 2016	Actual October 2017			Projected Resident Students (including SDC and NPS) in Oct. of			Projected Resident Student Population Change to October		
		Resident Students	Attending Adjust	Attending Enrollment	2018	2019	2023	2018	2019	2023
Fremont	79	2,126	-22	2,104	2,142	2,219	2,236	16	93	110
Homestead	50	2,438	3	2,441	2,434	2,444	2,307	-4	6	-131
Monta Vista	32	2,373	-15	2,358	2,342	2,305	1,873	-31	-68	-500
Cupertino	43	2,370	-97	2,273	2,431	2,416	2,272	61	46	-98
Lynbrook	-15	1,624	200	1,824	1,567	1,559	1,290	-57	-65	-334
Community NPS	NA	NA	7	7	NA	NA	NA			
	NA	NA	35	35	NA	NA	NA			
Total	189	10,931	111	11,042	10,916	10,943	9,978	-15	12	-953

Table 3 (PowerPoint version, page 1 of 2)

Relevant TK-12 Public School Resident Student Trends in Each Current High School Attendance Area

High School Region	Oct. of	Students Residing in High School Region and Enrolled in SSD, CUSD and FUHSD														
		TK	K	1	2	3	4	5	6	7	8	9	10	11	12	TK-12
Fremont	2011		987	886	834	828	756	663	588	549	537	523	528	505	460	8,644
	2012	10	881	965	862	827	815	714	588	577	534	474	514	537	508	8,806
	2013	92	824	886	910	832	792	739	621	578	540	493	459	501	555	8,822
	2014	171	742	880	839	875	783	731	645	585	546	502	493	470	514	8,776
	2015	170	813	772	832	774	806	732	610	615	560	514	507	485	475	8,665
	2016	137	840	801	737	788	736	742	664	582	599	541	504	516	486	8,673
	2017	140	822	850	787	724	752	691	677	611	552	588	521	498	519	8,732

Net Change to 2017 Since Highest TK-12 Total Achieved in 2011 or Later -90

Homestead	2011		590	608	625	623	571	529	558	533	534	599	578	582	536	7,466
	2012	5	580	631	602	625	619	568	542	557	537	600	606	581	568	7,621
	2013	59	599	589	655	603	614	591	554	549	586	588	602	613	574	7,776
	2014	77	518	651	602	660	616	614	579	557	558	635	572	598	599	7,836
	2015	95	564	561	653	586	645	591	600	566	573	591	616	569	573	7,783
	2016	88	549	578	555	634	551	608	590	597	575	620	604	611	553	7,713
	2017	69	562	551	576	541	639	554	605	596	598	619	621	598	600	7,729

Net Change to 2017 Since Highest TK-12 Total Achieved in 2011 or Later -107

Cupertino	2011		569	593	640	583	594	580	558	516	494	497	483	459	430	6,996
	2012	23	585	622	639	648	599	593	556	554	525	508	500	477	458	7,287
	2013	47	537	618	624	642	649	611	585	574	558	522	518	497	478	7,460
	2014	56	513	568	653	607	650	641	597	591	584	551	553	510	504	7,578
	2015	89	541	559	588	667	594	635	641	599	599	603	564	539	496	7,714
	2016	90	561	596	572	595	657	576	629	640	594	605	622	565	535	7,837
	2017	88	559	588	612	558	573	619	559	626	620	614	597	618	541	7,772

Net Change to 2017 Since Highest TK-12 Total Achieved in 2011 or Later -65

Table 3 (PowerPoint version, page 2 of 2)

Relevant TK-12 Public School Resident Student Trends in Each Current High School Attendance Area

High School Region	Oct. of	Students Residing in High School Region and Enrolled in SSD, CUSD and FUHSD														
		TK	K	1	2	3	4	5	6	7	8	9	10	11	12	TK-12
Monta Vista	2011		455	537	541	588	585	579	615	527	576	607	613	637	655	7,515
	2012	18	418	493	550	588	601	602	599	630	545	584	610	613	634	7,485
	2013	36	410	486	511	553	610	611	625	605	635	559	584	614	597	7,436
	2014	55	348	472	518	495	578	601	642	633	611	633	546	583	601	7,316
	2015	74	391	406	487	535	498	584	595	646	612	605	618	537	574	7,162
	2016	56	367	424	429	483	528	511	588	606	644	605	596	605	535	6,977
	2017	57	354	391	457	441	487	507	486	562	581	618	578	585	592	6,696

Net Change to 2017 Since Highest TK-12 Total Achieved in 2011 or Later **-819**

Lynbrook	2011		253	293	338	322	332	353	429	410	423	426	432	432	397	4,840
	2012	7	215	279	317	361	358	364	383	447	425	450	439	437	415	4,897
	2013	11	220	254	307	323	376	385	377	381	447	444	451	439	422	4,837
	2014	35	202	264	274	321	327	377	400	389	388	440	442	447	419	4,725
	2015	27	187	236	283	287	339	335	376	409	387	382	440	442	440	4,570
	2016	28	177	197	267	298	299	349	363	377	406	391	376	441	431	4,400
	2017	32	184	207	231	284	309	303	361	363	378	434	389	373	428	4,276

Net Change to 2017 Since Highest TK-12 Total Achieved in 2011 or Later **-621**

Notes: (1) Figures include TK-12 SDC and a nominal number of NPS students but exclude intra- and inter-district enrollments and a small number of students listed at residentially unlocatable addresses such as post office boxes.
 (2) Color codes for by-grade student totals are: red = 900s, pink = 800s, rust = 700s, orange = 600s, yellow = 500s, green = 400s, blue = 300s, lavender = 200s, brown = 100s, grey = highest TK-12 total since 2011 for each HS region

Chart 2: Actual TK through Fourth Grade Students Santa Clara Co. Public Schools

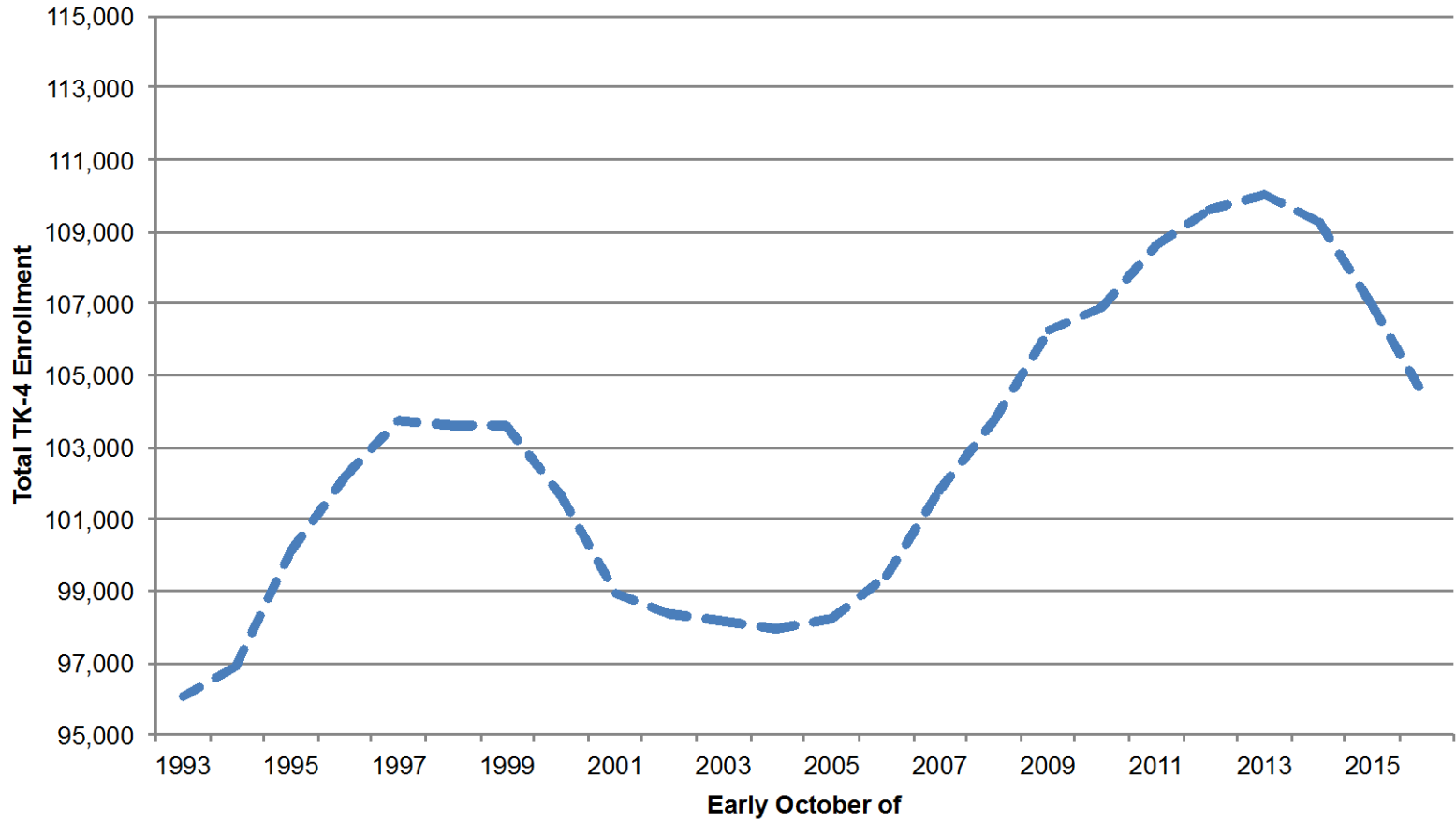


Table 4 (PowerPoint version, page 1 of 2)
Most Significant Resident Student Population Trends by Housing Type and Location

Elem. District Region	Housing Type	Early Oct. of	Students in TK-8	ESD-Enrolled TK-8 Resident Student Pop. Change Since		Students in 9-12	FUHSD-Enrolled 9-12 Resident Student Pop. Change Since	
				Prior Year	Oct. 2014		Prior Year	Oct. 2014
SSD	Existing SFD	2014	3,072			1,317		
		2015	3,016	-56		1,291	-26	
		2016	2,984	-32		1,327	36	
		2017	2,978	-6	-94	1,400	73	83
	Existing ATT	2014	2,939			1,040		
		2015	2,871	-68		990	-50	
		2016	2,788	-83		1,013	23	
		2017	2,806	18	-133	975	-38	-65
	All Existing Units (including mobile homes and areas with a mix of types)	2014	6,660			2,608		
		2015	6,499	-161		2,547	-61	
		2016	6,355	-144		2,619	72	
		2017	6,339	-16	-321	2,653	34	45
New Dwellings	2014	52			25			
	2015	68	16		29	4		
	2016	107	39		36	7		
	2017	144	37	92	59	23	34	

Table 4 (PowerPoint version, page 2 of 2)
Most Significant Resident Student Population Trends by Housing Type and Location

Elem. District Region	Housing Type	Early Oct. of	Students in TK-8	ESD-Enrolled TK-8 Resident Student Pop. Change Since		Students in 9-12	FUHSD-Enrolled 9-12 Resident Student Pop. Change Since	
				Prior Year	Oct. 2014		Prior Year	Oct. 2014
CUSD	Existing SFD	2014	10,740			5,267		
		2015	10,495	-245		5,322	55	
		2016	10,088	-407		5,400	78	
		2017	9,573	-515	-1,167	5,509	109	242
	Existing ATT	2014	7,894			2,598		
		2015	7,943	49		2,550	-48	
		2016	7,994	51		2,565	15	
		2017	7,903	-91	9	2,644	79	46
	All Existing Units (including areas with a mix of housing types)	2014	18,813			7,938		
		2015	18,610	-203		7,946	8	
		2016	18,237	-373		8,032	86	
		2017	17,631	-606	-1,182	8,225	193	287
New Dwellings	2014	73			43			
	2015	136	63		53	10		
	2016	151	15		55	2		
	2017	146	-5	73	58	3	15	

Table 6 (PowerPoint version): Student Generation Rates (SGRs) from Recently Built Housing

Elementary District Region	Category of Recently Built Housing	Sampled Housing Units	Actual October 2017 Students Enrolled in the Respective Districts				Avg. Student Generation Rate (SGR) (rounded)		
			TK-2	3-5	6-8	9-12	TK-8	9-12	TK-12
Sunnyvale	SFD	38	3	0	2	1	0.13	0.03	0.16
	Regular ATT in CMS	1,311	15	8	4	14	0.02	0.01	0.03
	Regular ATT in SMS	425	14	4	9	14	0.06	0.03	0.10
	BMR ATT (non-SRO)	60	10	6	5	10	0.35	0.17	0.52
	BMR SRO ATT	63	0	0	0	3	0.00	0.05	0.05
Cupertino	SFD and SFA	72	8	4	8	10	0.28	0.14	0.42
	Regular ATT	284	44	30	16	24	0.32	0.08	0.40

Notes: (1) "SFD" = single family detached; "SFA" = single family attached, for modern large (1500+ s.f.) individually-owned townhome and plex units with multi-car garages connected to each unit in Cupertino USD region; "Regular ATT" (attached) = combined apartment, condo and traditional townhome and plex units in all areas and including SFA in Sunnyvale SD region; "BMR" = developments with at least 50% of units at below-market-rates; "SRO" = single-room-occupancy (developments of small studios with limited kitchen facilities and only one parking space per unit); (2) See text for locational considerations generally within the Columbia Middle School and Sunnyvale Middle School sections of the Sunnyvale SD region.

Table 7 (PowerPoint version): Projected New Housing Units (excludes housing units restricted to seniors)

Region	Housing Category	ESD Region	Projected Units in 12 Months to Oct. of						Total
			2018	2019	2020	2021	2022	2023	
Fremont HS	Regular ATT in CMS	SSD	423	550	522	450	400	225	2,570
	Regular ATT in SMS	SSD	115	0	0	0	75	220	410
	Regular ATT	CUSD	0	39	99	0	0	0	138
	BMR ATT (non-SRO)	SSD	66	0	0	0	4	35	105
	SFD	SSD	0	4	0	0	7	0	11
	SFD & SFA	CUSD	7	2	0	2	2	0	13
	Total			611	595	621	452	488	480
Homestead HS	Regular ATT in SMS	SSD	0	0	0	61	54	0	115
	BMR ATT (non-SRO)	SSD	0	0	30	30	0	0	60
	SFD	SSD	0	0	0	9	0	0	9
	SFD & SFA	CUSD	0	0	1	1	1	0	3
	Total			0	0	31	101	55	0
Monta Vista HS	Regular ATT	CUSD	0	15	45	143	169	80	452
	SFD & SFA	CUSD	9	6	10	12	10	10	57
	Total		9	21	55	155	179	90	509
Cupertino HS	Regular ATT	CUSD	120	0	250	460	490	410	1,730
	SFD & SFA	CUSD	0	0	0	0	3	0	3
	Total		120	0	250	460	493	410	1,733
Lynbrook HS	SFD & SFA	CUSD	4	0	0	0	0	0	4
	Total		4	0	0	0	0	0	4

Note: CMS and SMS are abbreviations for Columbia and Sunnyvale Middle School regions, respectively, of the SSD.

Additional information, including footnotes, for each of these PowerPoint tables can be found in the corresponding tables provided with the written report.



CAC OBJECTIVE for FALL MEETING

To determine a recommendation
for the Board for the
2018-19 school year
in regards to
Lynbrook High School enrollment