



► **PRELIMINARY
TRUSTEE AREA MAP
SCENARIOS**

FREMONT UNION HIGH SCHOOL DISTRICT
BOARD OF EDUCATION

October 17, 2023



COOPERATIVE
STRATEGIES
ASSESS • PLAN • FUND • BUILD

▶ OVERVIEW OF TRANSITION TO TRUSTEE AREAS

- On March 7, 2023, the FUHSD Board of Trustees passed Resolution 2223-19 indicating its intention to transition Governing Board elections from At-Large Elections to By-Trustee Area Elections.
- The transition will see Board members elected from trustee areas, instead of by all District voters.
- As part of this transition, the Board will seek input from the community on the development of the trustee area boundary map.
- This transition does not affect school site attendance boundaries.

At-Large Elections

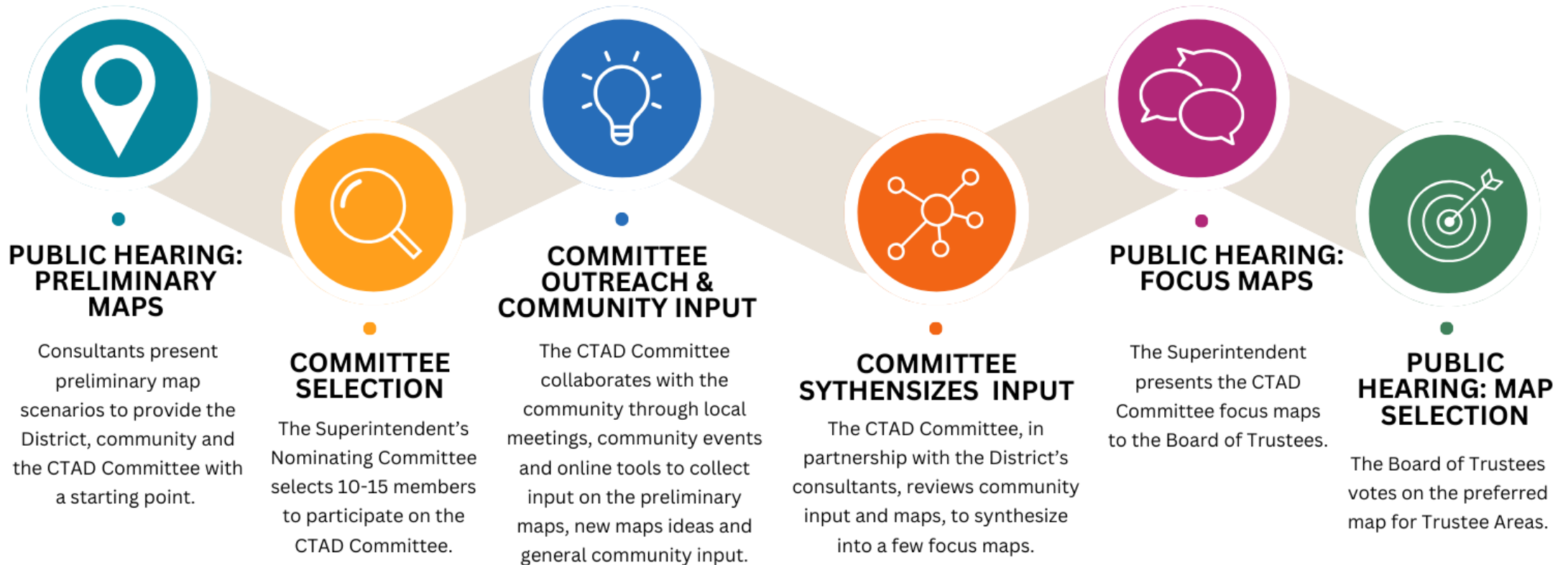
Candidates must reside within the District's boundaries and are elected by all the voters who reside in the District's boundaries (Education Code Section 5030(a)).



By-Trustee Area Elections

Candidates must reside in specific Trustee Areas within the District's boundaries and are elected only by the voters who reside in the same Trustee Areas (Education Code Section 5030(b)).

▶ HIGH-LEVEL TRUSTEE AREA DEVELOPMENT PROCESS



▶ CONSIDERATIONS IN DEVELOPING VOTING AREAS



Each area shall contain nearly equal number of inhabitants



Not drawn to favor incumbents



Drawn to comply with the Federal Voting Rights Act



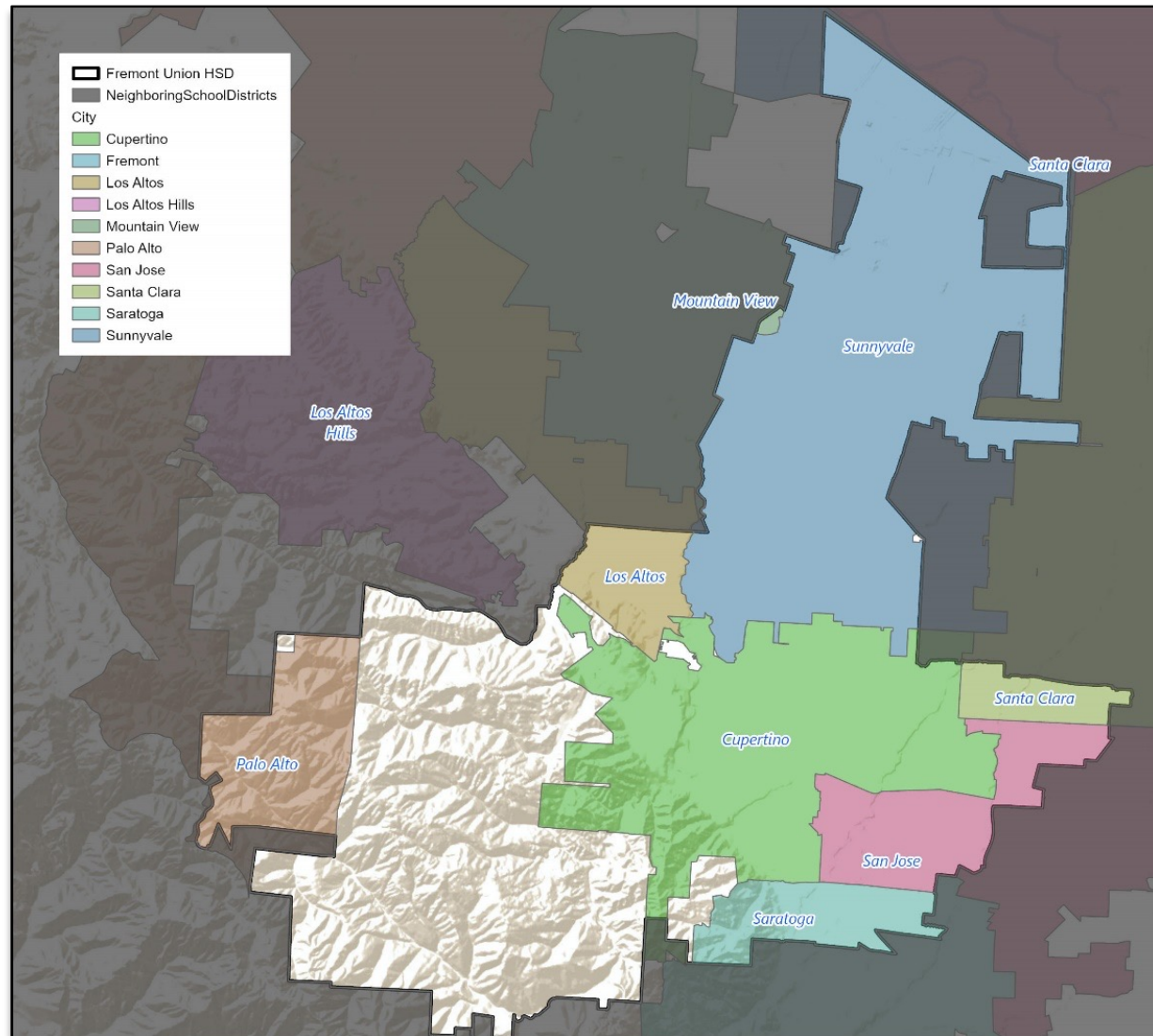
Other traditional/local criteria



AB 764 Criteria

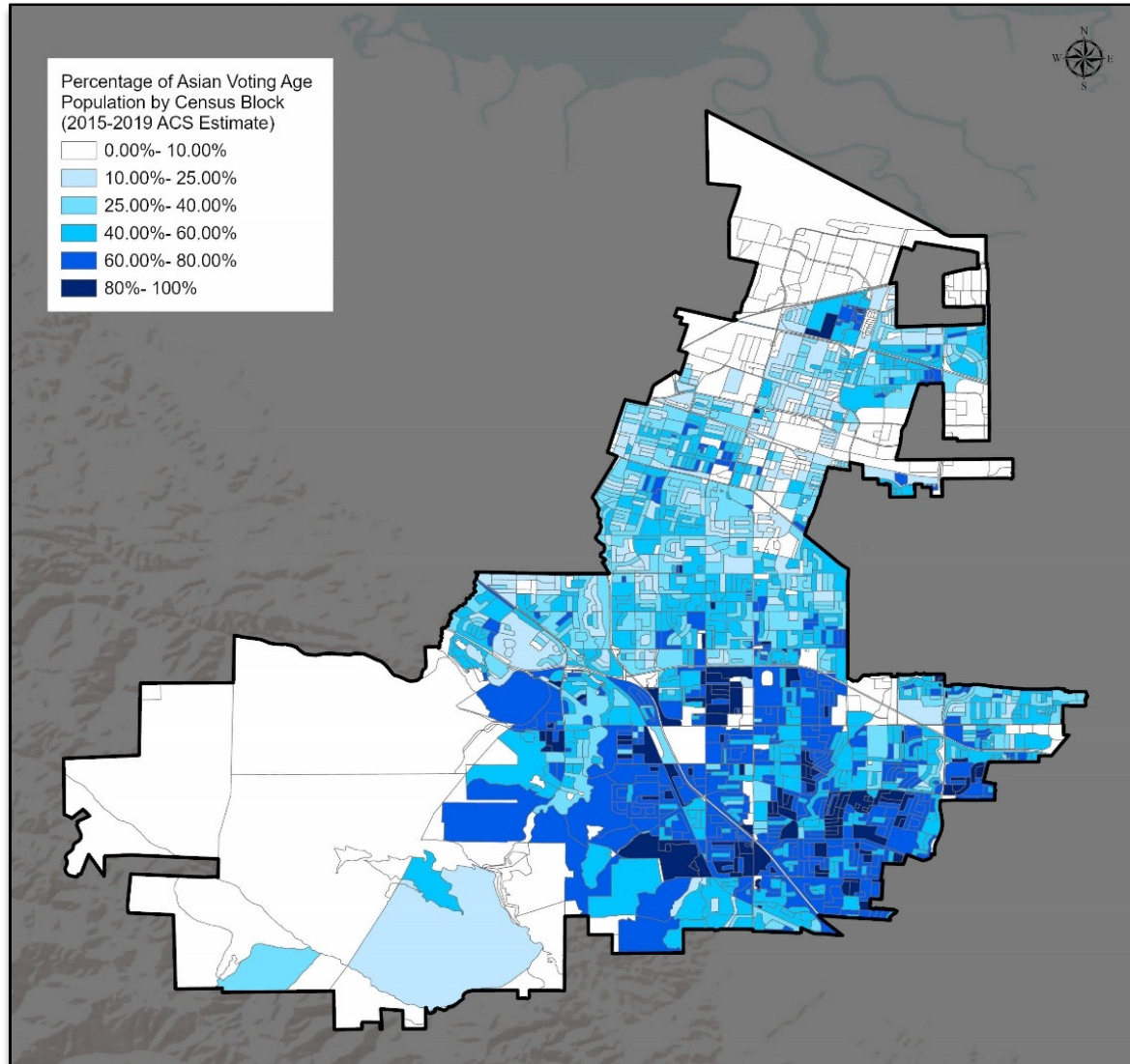
- Contiguous
- Maintain communities of interest
- City/census designated places
- Natural/artificial boundaries
- Compactness

► DISTRICT DEMOGRAPHICS
2020 CENSUS DATA



Population	Total Population		Age 18 +	
	Total	%	Total	%
Hispanic/Latino	26,326	10.9%	19,554	10.4%
White	60,823	25.3%	51,831	27.6%
Black/ African American	2,603	1.1%	2,142	1.1%
American Indian/Alaska Native	226	0.1%	137	0.1%
Asian	140,451	58.4%	108,126	57.6%
Native Hawaiian/ Pacific Islander	463	0.2%	371	0.2%
Other	1,163	0.5%	845	0.4%
Two or More Races	8,600	3.6%	4,872	2.6%
Total Population	240,655	100%	187,878	100%

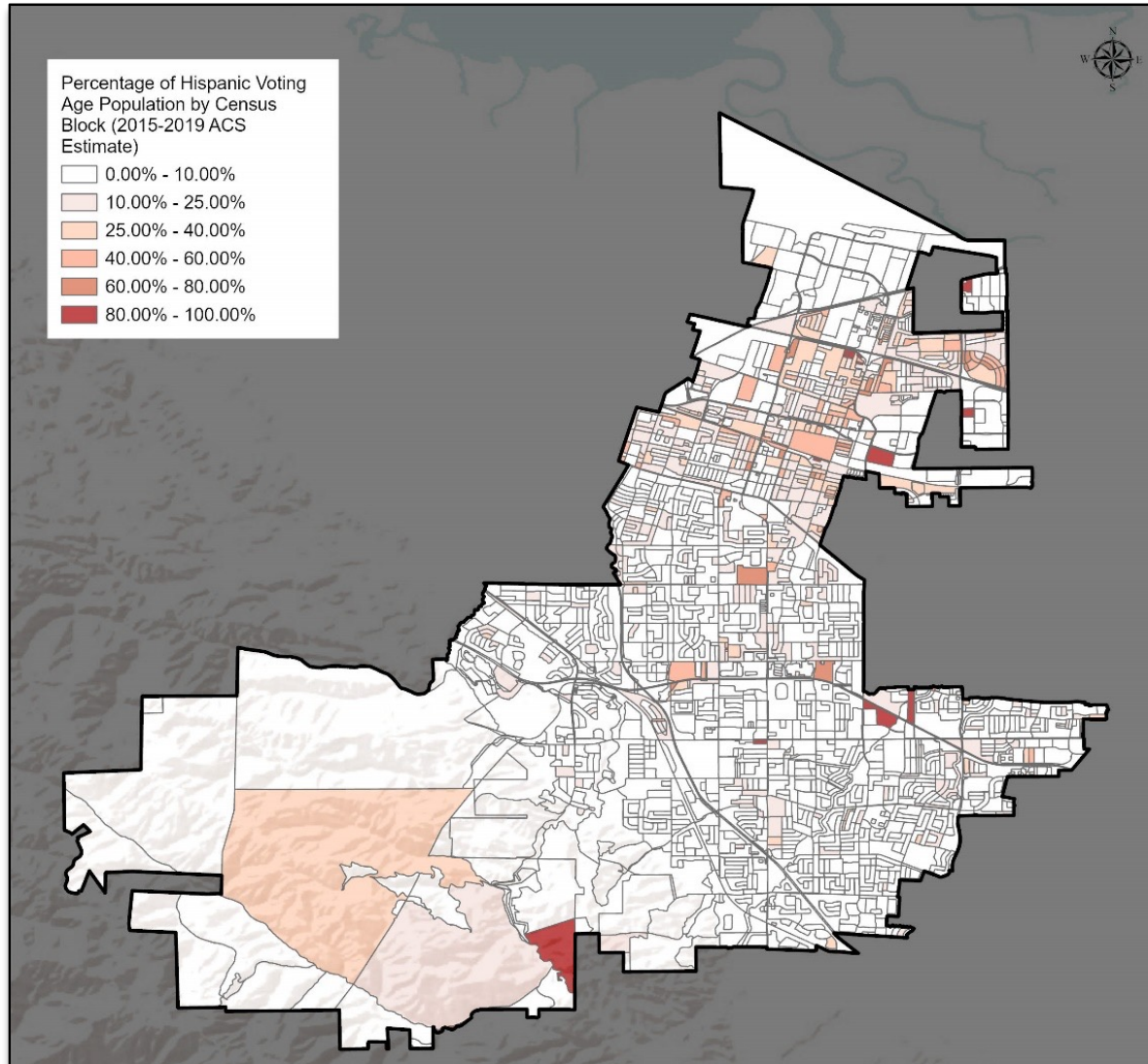
► DISTRICT DEMOGRAPHICS
ASIAN CITIZEN VOTING AGE POPULATION ESTIMATES



CVAP	2017-2021	
	Total	%
Hispanic/Latino	13,748	10.9%
White	47,540	37.8%
Black/ African American	2,286	1.8%
American Indian/Alaska Native	308	0.2%
Asian	58,049	46.1%
Native Hawaiian/ Pacific Islander	368	0.3%
Two or More Races	3,505	2.8%
Total Population	125,804	100%

Citizen Voting Age Population (CVAP); Source: American Community Survey, 2017-2021 Data

► DISTRICT DEMOGRAPHICS
HISPANIC CITIZEN VOTING AGE POPULATION ESTIMATES

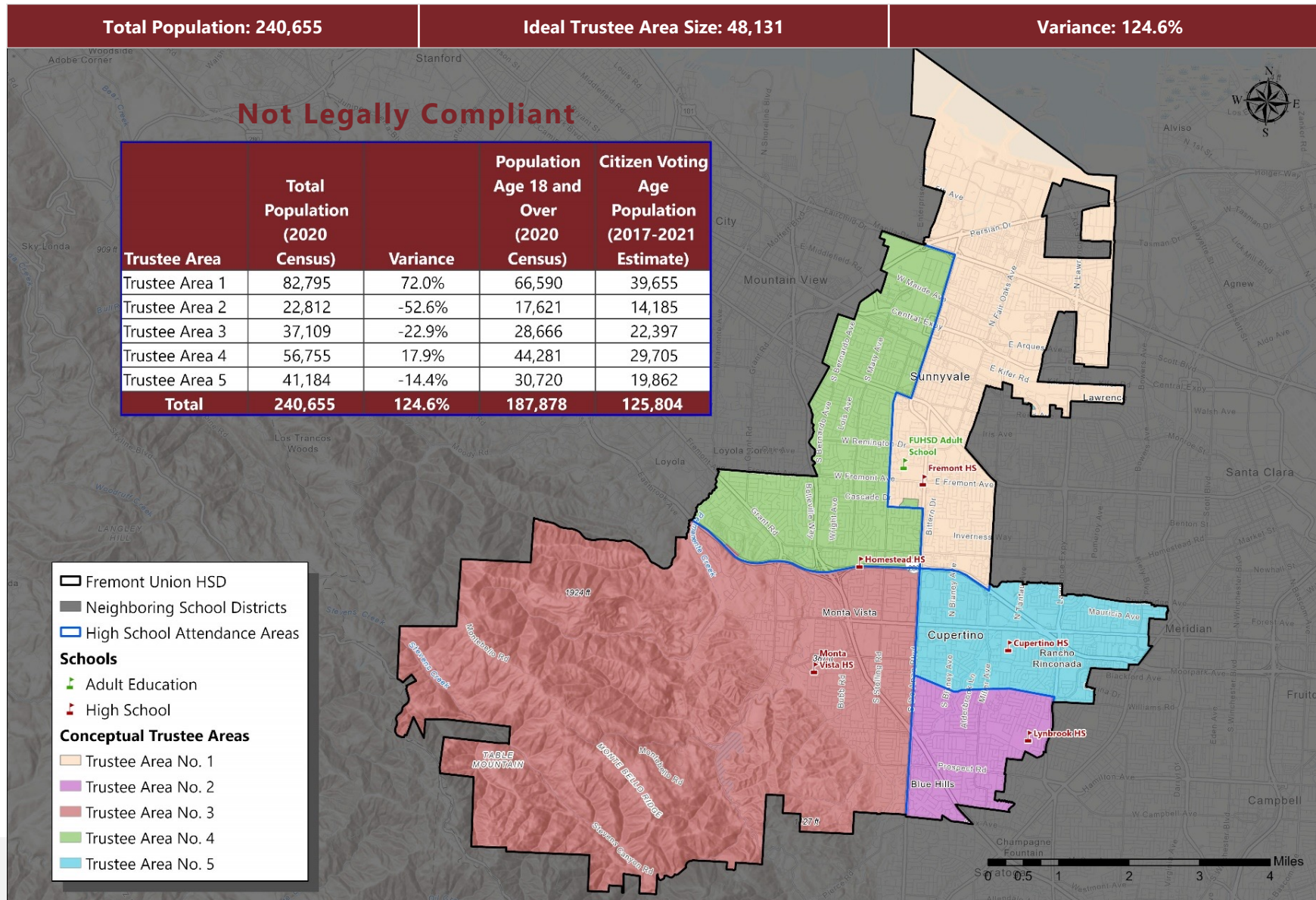


CVAP	2017-2021	
	Total	%
Hispanic/Latino	13,748	10.9%
White	47,540	37.8%
Black/ African American	2,286	1.8%
American Indian/Alaska Native	308	0.2%
Asian	58,049	46.1%
Native Hawaiian/ Pacific Islander	368	0.3%
Two or More Races	3,505	2.8%
Total Population	125,804	100%

Citizen Voting Age Population (CVAP); Source: American Community Survey, 2017-2021 Data

► Trustee Areas Coterminous with High School Attendance Boundaries

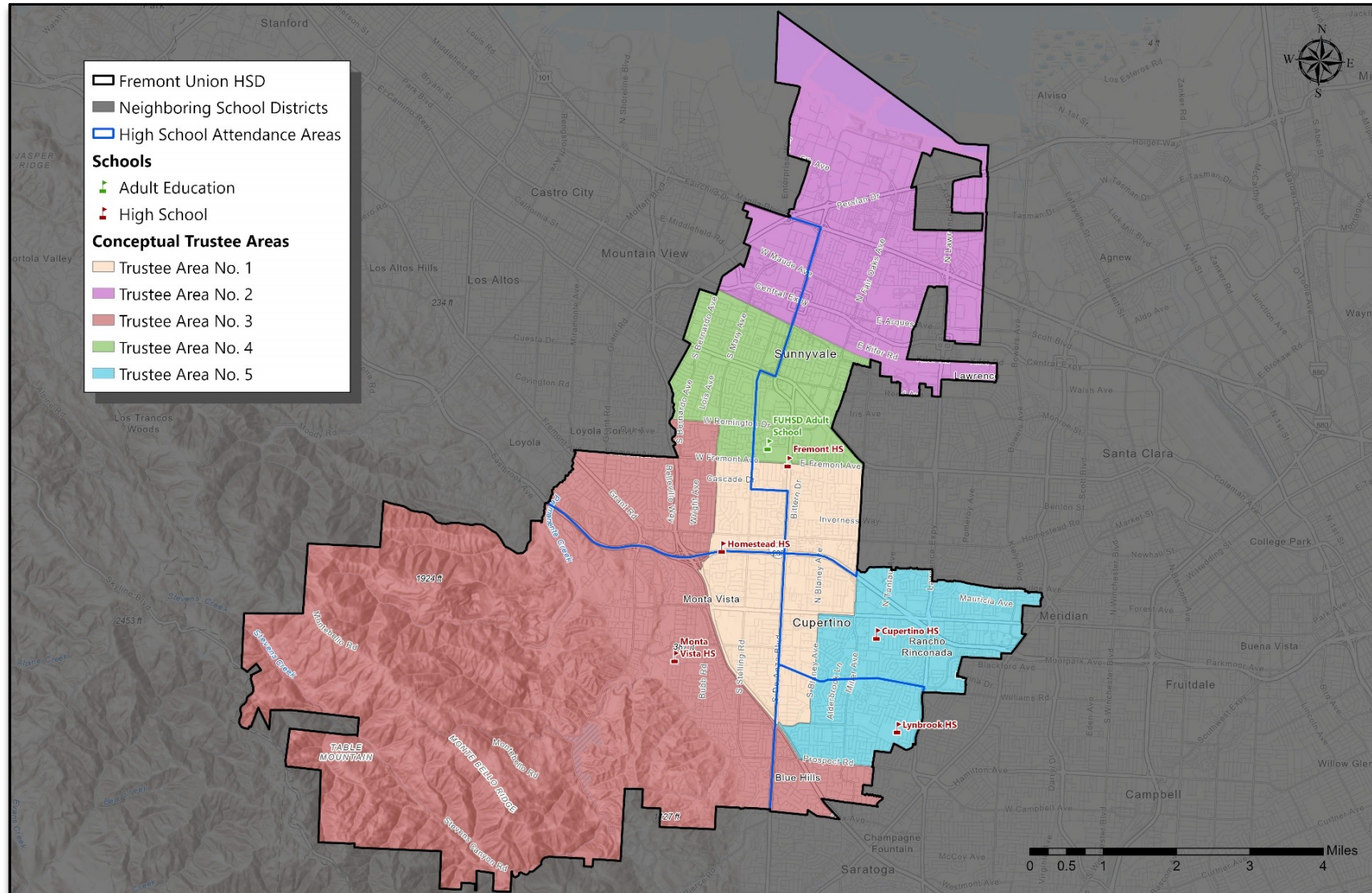
For Descriptive Purposes Only-This Map Is Not Legally Compliant



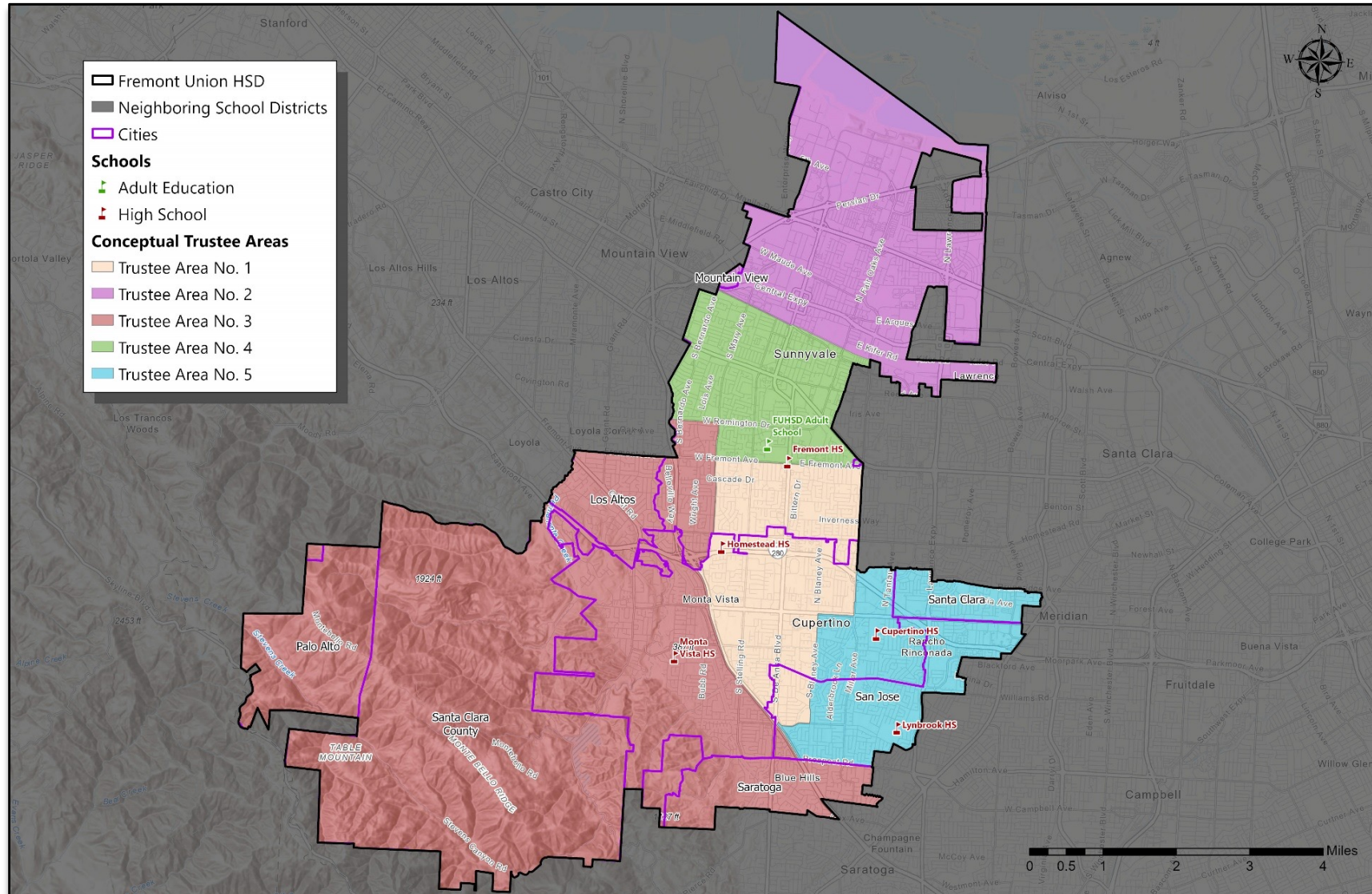
A row of yellow school buses is parked in a grassy field under a cloudy sky. A large, semi-transparent graphic overlay, consisting of several horizontal bands, is centered over the image. The text "MAP SCENARIOS 1-4" is displayed in white, bold, sans-serif font across the middle of the graphic.

MAP SCENARIOS 1-4

► **CONCEPTUAL TRUSTEE AREAS**
SCENARIO 1 (With High School Attendance Boundaries Shown)



► **CONCEPTUAL TRUSTEE AREAS**
SCENARIO 1 (With City Boundaries Shown)



► **DEMOGRAPHICS**
SCENARIO 1

Total Population:	240,655	Ideal Trustee Area Size:	48,131	Variance:	6.1%
--------------------------	----------------	---------------------------------	---------------	------------------	-------------

TRUSTEE AREA	Trustee Area 1		Trustee Area 2		Trustee Area 3		Trustee Area 4		Trustee Area 5	
TP* vs. CVAP**	TP	CVAP	TP	CVAP	TP	CVAP	TP	CVAP	TP	CVAP
Population	49,025	24,849	49,476	24,126	47,008	29,323	48,620	23,098	46,526	24,408
Population Variance	1.9%	N/A	2.8%	N/A	-2.3%	N/A	1.0%	N/A	-3.3%	N/A
Hispanic/Latino	6.0%	6.8%	23.1%	26.2%	4.0%	4.0%	14.6%	13.2%	6.3%	6.0%
White	23.4%	34.0%	21.7%	34.9%	31.7%	41.5%	30.1%	48.9%	19.4%	29.5%
Black/African American	0.9%	1.3%	1.7%	2.7%	0.6%	0.8%	1.2%	2.0%	0.9%	2.6%
American Indian/Alaska Native	0.1%	0.1%	0.1%	0.3%	0.1%	0.1%	0.1%	0.6%	0.1%	0.2%
Asian	66.1%	54.7%	48.9%	32.4%	58.9%	51.4%	49.1%	30.7%	69.4%	59.2%
Native Hawaiian/Other Pacific Islander	0.1%	0.0%	0.5%	0.4%	0.1%	0.6%	0.2%	0.1%	0.1%	0.2%
Other	0.4%	0.0%	0.6%	0.0%	0.4%	0.0%	0.5%	0.0%	0.5%	0.0%
Two or More Races	3.0%	3.0%	3.4%	3.0%	4.1%	1.6%	4.1%	4.4%	3.3%	2.3%

* TP – Total Population

** CVAP – Citizen Voting Age Population

► DISTRICT DEMOGRAPHICS SCENARIO 1



Trustee Area 1 (Cream Color)

- High School Attendance Boundaries
 - Fremont
 - Homestead
 - Monta Vista
 - Cupertino
 - Lynbrook
- Cities
 - Portion of Sunnyvale
 - Portion of Cupertino
 - Portion of West San Jose

Trustee Area 3 (Salmon Color)

- High School Attendance Boundaries
 - Homestead
 - Monta Vista
 - Lynbrook
- Cities
 - Portion of Sunnyvale
 - South-Eastern Portion of Los Altos
 - South-Eastern Portion of Palo Alto
 - Unincorporated Santa Clara County
 - Portion of Cupertino
 - Northern Portion of Saratoga
 - Small Portion of West San Jose

Trustee Area 2 (Purple Color)

- High School Attendance Boundaries
 - Fremont
 - Homestead
- Cities
 - Portion of Sunnyvale
 - Small Portion of Mountain View

Trustee Area 4 (Green Color)

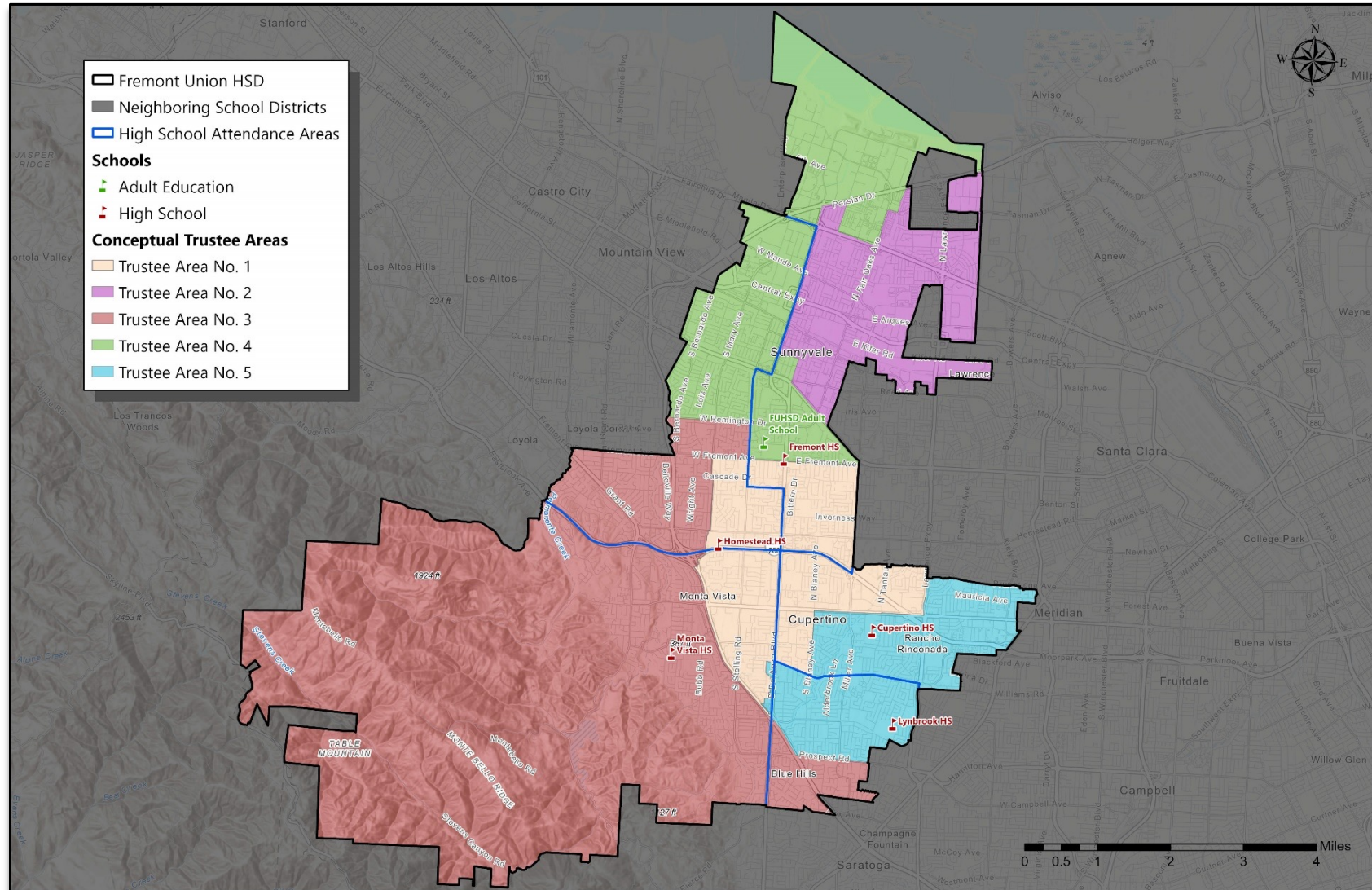
- High School Attendance Boundaries
 - Fremont
 - Homestead
- Cities
 - Portion of Sunnyvale

Trustee Area 5 (Blue Color)

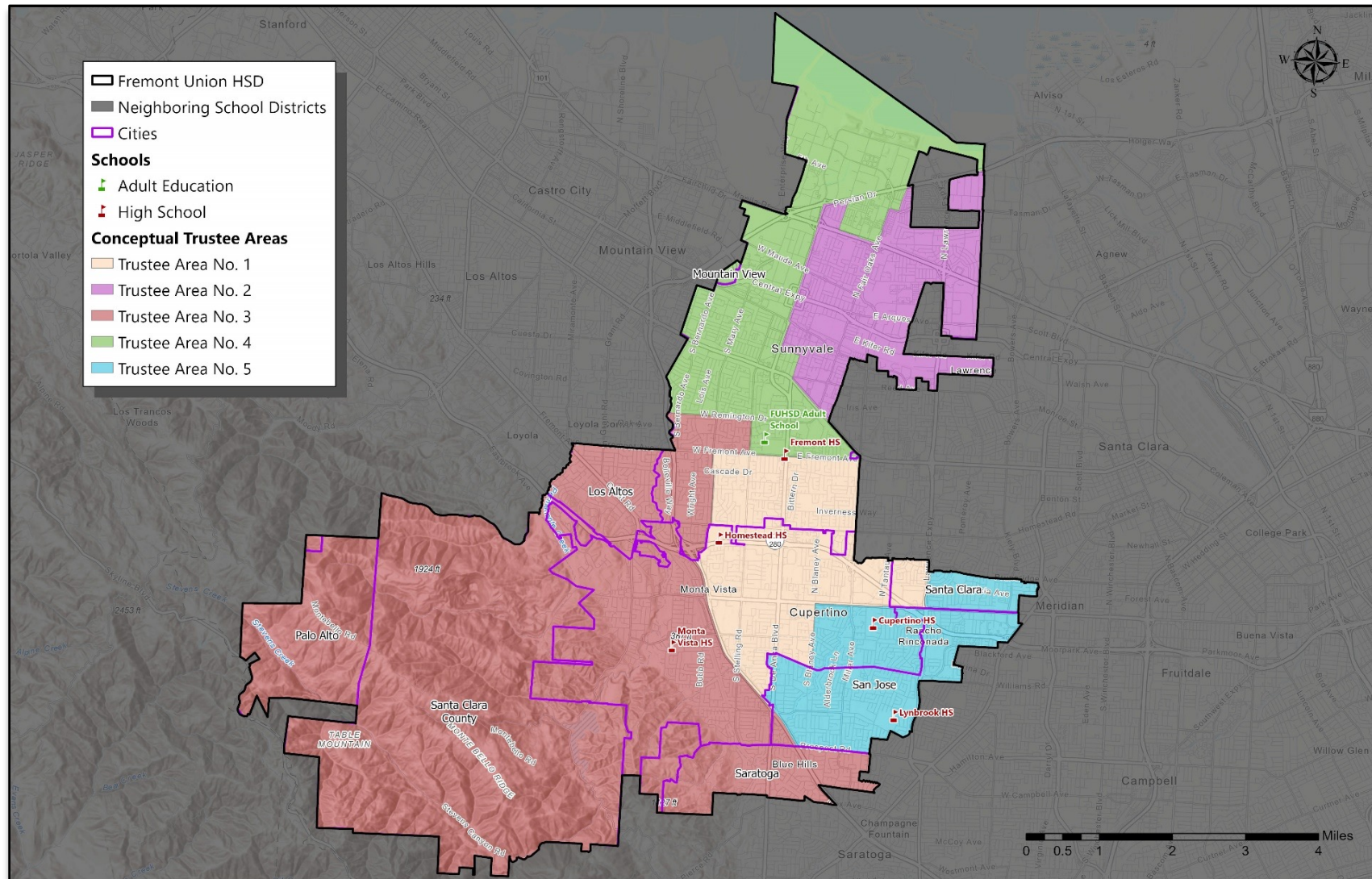
- High School Attendance Boundaries
 - Cupertino
 - Lynbrook
- Cities
 - Portion of Cupertino
 - Portion of West San Jose
 - South-Western Portion of Santa Clara

Trustee Area	City/Municipality								High School Attendance Boundary				
	Cupertino	Los Altos	Mountain View	Palo Alto	San Jose	Santa Clara	Saratoga	Sunnyvale	Cupertino	Fremont	Homestead	Lynbrook	Monta Vista
Trustee Area No. 1	✓				✓			✓	✓	✓	✓	✓	✓
Trustee Area No. 2			✓					✓		✓	✓		
Trustee Area No. 3	✓	✓		✓	✓		✓	✓			✓	✓	✓
Trustee Area No. 4								✓		✓	✓		
Trustee Area No. 5	✓				✓	✓			✓			✓	

► **CONCEPTUAL TRUSTEE AREAS**
SCENARIO 2 (With High School Attendance Boundaries Shown)



► **CONCEPTUAL TRUSTEE AREAS**
SCENARIO 2 City (With City Boundaries Shown)



► **DEMOGRAPHICS**
SCENARIO 2

Total Population:	240,655	Ideal Trustee Area Size:	48,131	Variance:	6.7%
--------------------------	----------------	---------------------------------	---------------	------------------	-------------

TRUSTEE AREA	Trustee Area 1		Trustee Area 2		Trustee Area 3		Trustee Area 4		Trustee Area 5	
TP* vs. CVAP**	TP	CVAP	TP	CVAP	TP	CVAP	TP	CVAP	TP	CVAP
Population	48,343	23,875	49,730	24,434	48,868	30,320	46,506	21,793	47,208	25,382
Population Variance	0.4%	N/A	3.3%	N/A	1.5%	N/A	-3.4%	N/A	-1.9%	N/A
Hispanic/Latino	5.9%	6.2%	25.2%	28.4%	4.0%	4.1%	12.7%	11.0%	6.5%	6.7%
White	23.8%	35.2%	21.6%	36.8%	32.1%	41.6%	29.9%	47.2%	19.0%	28.5%
Black/African American	0.9%	1.0%	1.7%	2.0%	0.7%	0.8%	1.2%	2.8%	1.0%	2.8%
American Indian/Alaska Native	0.1%	0.1%	0.1%	0.5%	0.1%	0.1%	0.1%	0.4%	0.1%	0.2%
Asian	65.8%	54.1%	46.8%	28.9%	58.5%	50.9%	51.4%	34.4%	69.7%	59.7%
Native Hawaiian/Other Pacific Islander	0.1%	0.0%	0.5%	0.4%	0.1%	0.6%	0.2%	0.1%	0.1%	0.2%
Other	0.4%	0.0%	0.5%	0.0%	0.5%	0.0%	0.5%	0.0%	0.5%	0.0%
Two or More Races	3.0%	3.4%	3.5%	2.9%	4.2%	2.0%	4.0%	4.1%	3.2%	1.9%

* TP – Total Population

** CVAP – Citizen Voting Age Population

► DISTRICT DEMOGRAPHICS SCENARIO 2



Trustee Area 1 (Cream Color)

- High School Attendance Boundaries
 - Fremont
 - Homestead
 - Monta Vista
 - Cupertino
- Cities
 - Portion of Sunnyvale
 - Portion of Cupertino
 - Small Portion of South-East Portion Santa Clara

Trustee Area 3 (Salmon Color)

- High School Attendance Boundaries
 - Homestead
 - Monta Vista
 - Lynbrook
- Cities
 - Portion of Sunnyvale
 - South-Eastern Portion of Los Altos
 - South-Eastern Portion of Palo Alto
 - Unincorporated Santa Clara County
 - Portion of Cupertino
 - Northern Portion of Saratoga
 - Small Portion of East San Jose

Trustee Area 2 (Purple Color)

- High School Attendance Boundaries
 - Fremont
- Cities
 - Portion of Sunnyvale

Trustee Area 4 (Green Color)

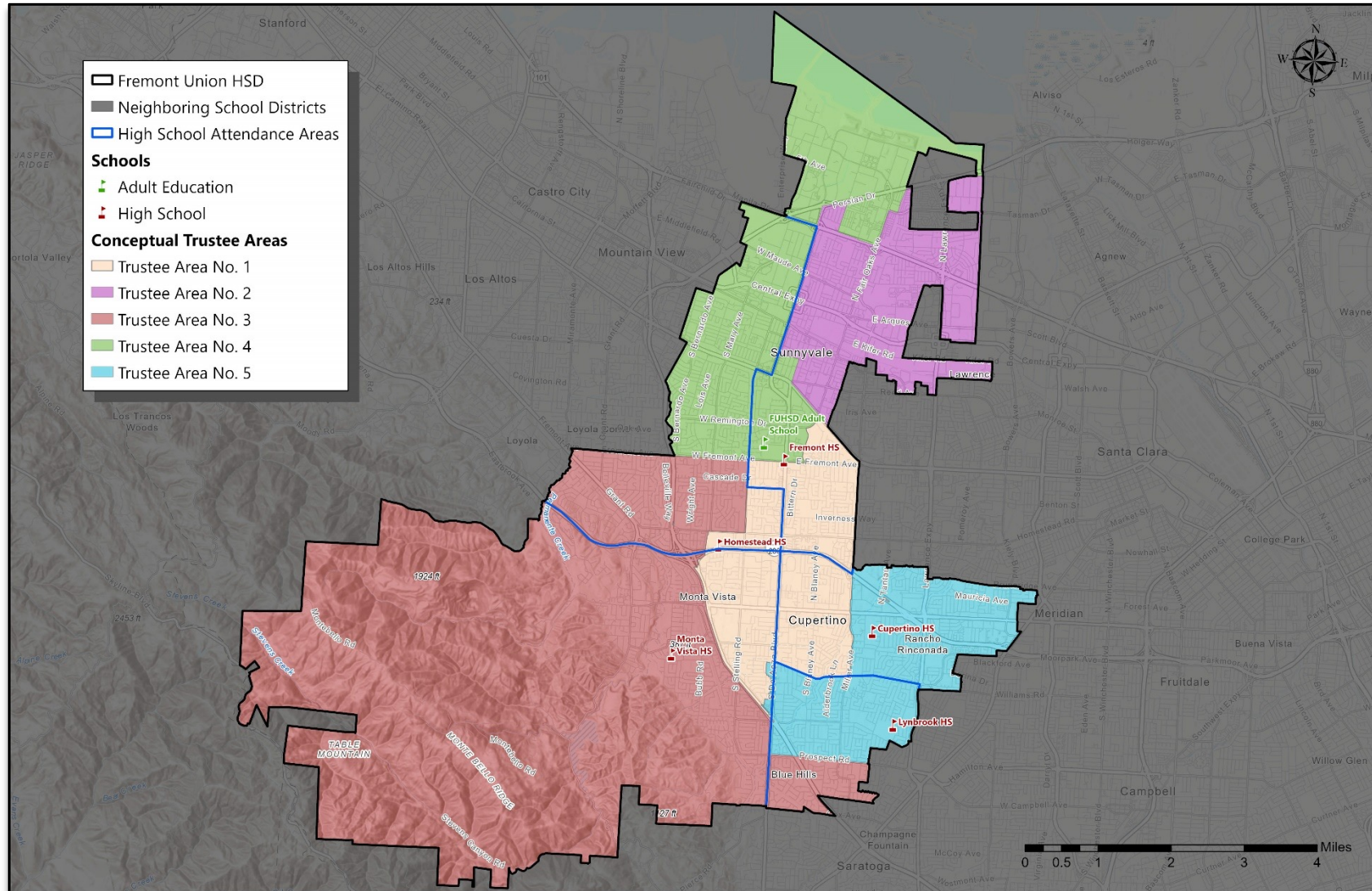
- High School Attendance Boundaries
 - Fremont
 - Homestead
- Cities
 - Portion of Sunnyvale
 - Small Portion of Mountain View

Trustee Area 5 (Blue Color)

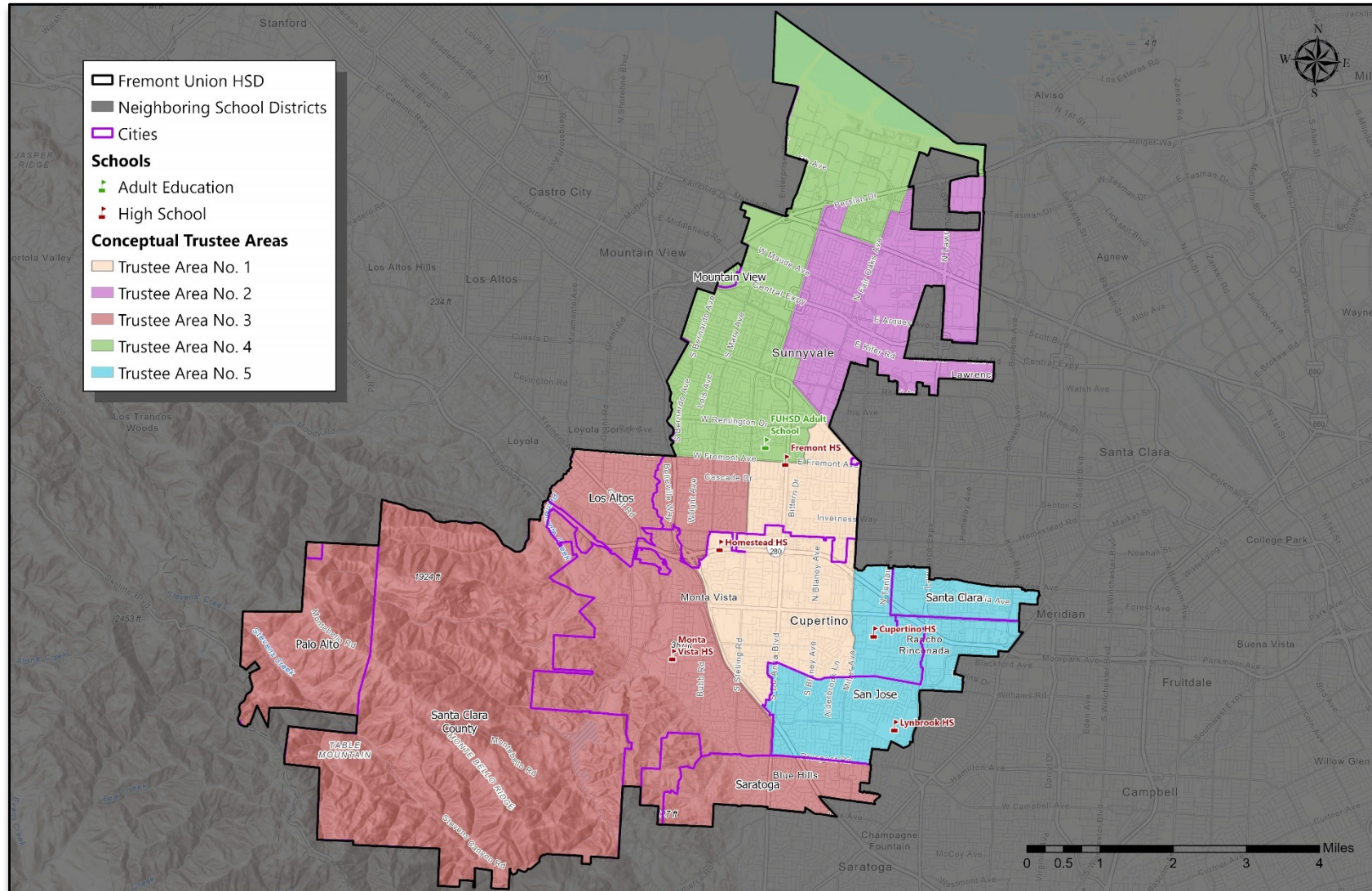
- High School Attendance Boundaries
 - Cupertino
 - Lynbrook
- Cities
 - Portion of Cupertino
 - Western portion of San Jose
 - South-Western Portion of Santa Clara

Trustee Area	City/Municipality								High School Attendance Boundary				
	Cupertino	Los Altos	Mountain View	Palo Alto	San Jose	Santa Clara	Saratoga	Sunnyvale	Cupertino	Fremont	Homestead	Lynbrook	Monta Vista
Trustee Area No. 1	✓					✓		✓	✓	✓	✓		✓
Trustee Area No. 2								✓		✓			
Trustee Area No. 3	✓	✓		✓	✓		✓	✓			✓	✓	✓
Trustee Area No. 4			✓					✓		✓	✓		
Trustee Area No. 5	✓				✓	✓			✓			✓	

► **CONCEPTUAL TRUSTEE AREAS**
SCENARIO 3 (With High School Attendance Boundaries Shown)



► **CONCEPTUAL TRUSTEE AREAS**
SCENARIO 3 (With City Boundaries Shown)



► **DEMOGRAPHICS**
SCENARIO 3

Total Population:	240,655	Ideal Trustee Area Size:	48,131	Variance:	7.4%
--------------------------	----------------	---------------------------------	---------------	------------------	-------------

TRUSTEE AREA	Trustee Area 1		Trustee Area 2		Trustee Area 3		Trustee Area 4		Trustee Area 5	
TP* vs. CVAP**	TP	CVAP	TP	CVAP	TP	CVAP	TP	CVAP	TP	CVAP
Population	48,339	24,612	49,730	24,434	46,171	29,812	48,727	22,611	47,688	24,335
Population Variance	0.4%	N/A	3.3%	N/A	-4.1%	N/A	1.2%	N/A	-0.9%	N/A
Hispanic/Latino	6.2%	6.0%	25.2%	28.4%	3.8%	4.0%	12.4%	10.9%	6.3%	6.9%
White	23.0%	33.8%	21.6%	36.8%	33.0%	41.6%	30.2%	48.0%	18.8%	28.7%
Black/African American	0.9%	0.9%	1.7%	2.0%	0.6%	0.7%	1.2%	2.8%	1.0%	3.0%
American Indian/Alaska Native	0.1%	0.4%	0.1%	0.5%	0.1%	0.1%	0.1%	0.1%	0.1%	0.2%
Asian	66.2%	55.6%	46.8%	28.9%	57.9%	51.4%	51.3%	34.0%	70.1%	58.8%
Native Hawaiian/Other Pacific Islander	0.1%	0.0%	0.5%	0.4%	0.1%	0.6%	0.2%	0.1%	0.1%	0.2%
Other	0.4%	0.0%	0.5%	0.0%	0.4%	0.0%	0.5%	0.0%	0.5%	0.0%
Two or More Races	3.1%	3.4%	3.5%	2.9%	4.2%	1.6%	4.1%	4.2%	3.1%	2.2%

* TP – Total Population

** CVAP – Citizen Voting Age Population

► DISTRICT DEMOGRAPHICS

SCENARIO 3



Trustee Area 1 (Cream Color)

- High School Attendance Boundaries
 - Fremont
 - Homestead
 - Monta Vista
 - Cupertino
- Cities
 - Portion of Sunnyvale
 - Portion of Cupertino

Trustee Area 3 (Salmon Color)

- High School Attendance Boundaries
 - Homestead
 - Monta Vista
 - Lynbrook
- Cities
 - Portion of Sunnyvale
 - South-Eastern Portion of Los Altos
 - South-Eastern Portion of Palo Alto
 - Unincorporated Santa Clara County
 - Portion of Cupertino
 - Northern Portion of Saratoga

Trustee Area 2 (Purple Color)

- High School Attendance Boundaries
 - Fremont
- Cities
 - Portion of Sunnyvale

Trustee Area 4 (Green Color)

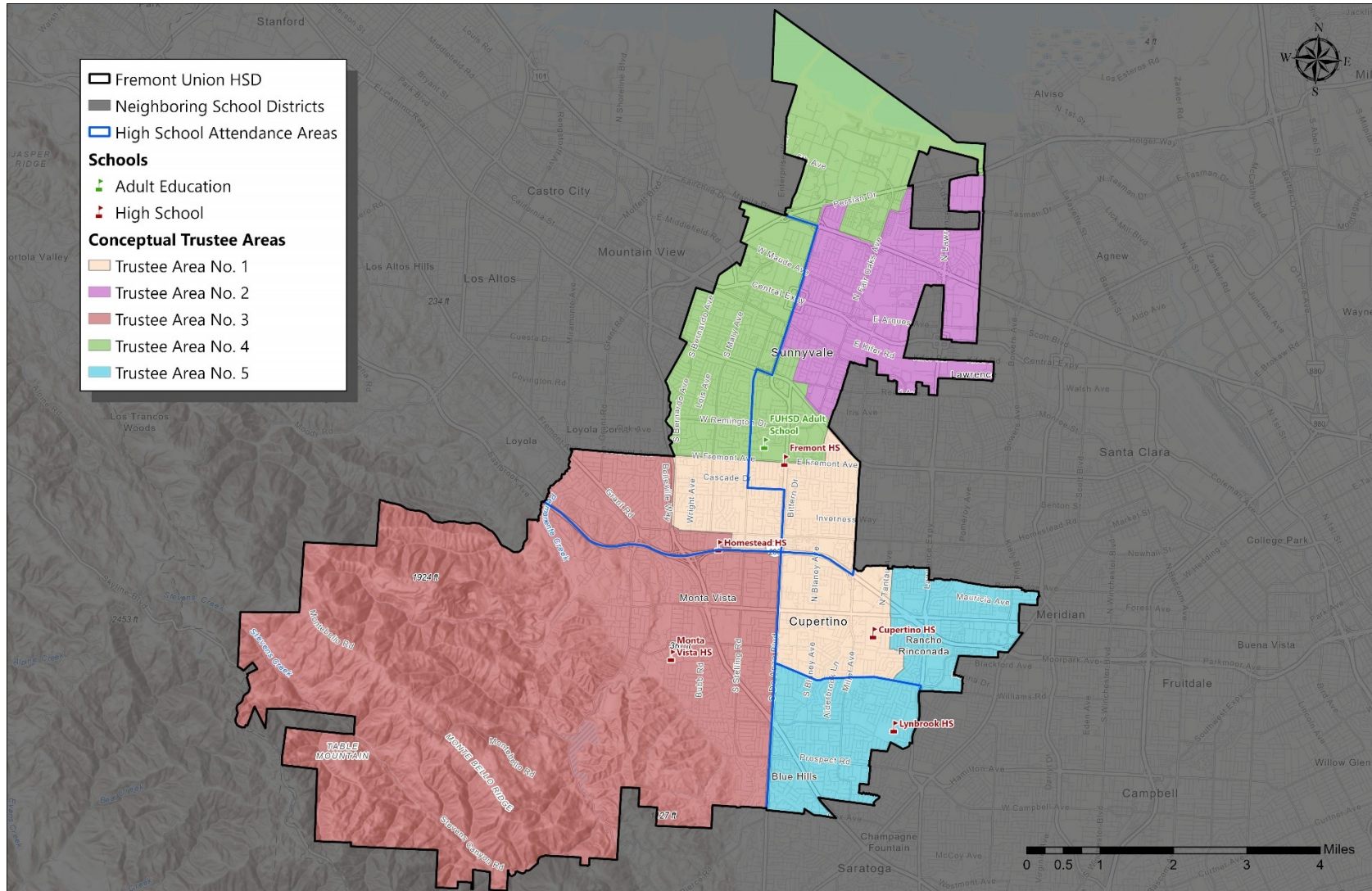
- High School Attendance Boundaries
 - Fremont
 - Homestead
- Cities
 - Portion of Sunnyvale
 - Small Portion of Mountain View

Trustee Area 5 (Blue Color)

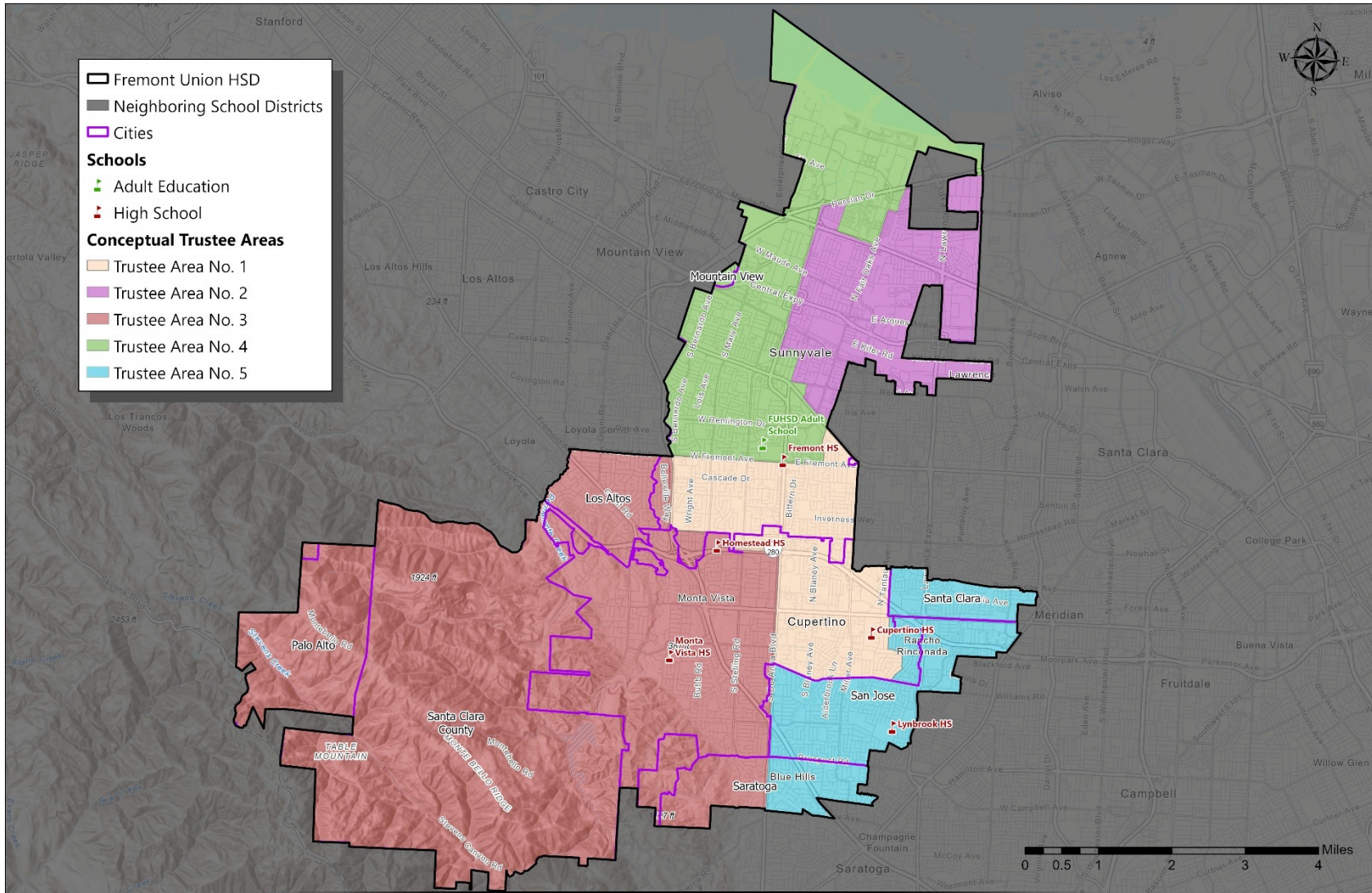
- High School Attendance Boundaries
 - Cupertino
 - Lynbrook
- Cities
 - Portion of Cupertino
 - Western portion of San Jose
 - South-Western Portion of Santa Clara

Trustee Area	City/Municipality								High School Attendance Boundary				
	Cupertino	Los Altos	Mountain View	Palo Alto	San Jose	Santa Clara	Saratoga	Sunnyvale	Cupertino	Fremont	Homestead	Lynbrook	Monta Vista
Trustee Area No. 1	✓							✓	✓	✓	✓		✓
Trustee Area No. 2								✓		✓			
Trustee Area No. 3	✓	✓		✓			✓	✓			✓	✓	✓
Trustee Area No. 4			✓					✓		✓	✓		
Trustee Area No. 5	✓				✓	✓			✓			✓	

► **CONCEPTUAL TRUSTEE AREAS**
SCENARIO 4 (With High School Attendance Boundaries Shown)



► **CONCEPTUAL TRUSTEE AREAS**
SCENARIO 4 (With City Boundaries Shown)



► **DEMOGRAPHICS**
SCENARIO 4

Total Population:	240,655	Ideal Trustee Area Size:	48,131	Variance:	6.5%
--------------------------	----------------	---------------------------------	---------------	------------------	-------------

TRUSTEE AREA	Trustee Area 1		Trustee Area 2		Trustee Area 3		Trustee Area 4		Trustee Area 5	
TP* vs. CVAP**	TP	CVAP	TP	CVAP	TP	CVAP	TP	CVAP	TP	CVAP
Population	47,123	25,169	49,610	24,393	47,514	28,808	49,758	23,102	46,650	24,332
Population Variance	-2.1%	N/A	3.1%	N/A	-1.3%	N/A	3.4%	N/A	-3.1%	N/A
Hispanic/Latino	6.4%	6.8%	25.2%	28.4%	3.9%	3.9%	12.3%	10.7%	6.1%	6.2%
White	27.4%	38.8%	21.6%	36.8%	27.7%	37.4%	30.2%	47.6%	19.2%	28.8%
Black/African American	1.0%	1.3%	1.7%	2.0%	0.5%	0.7%	1.2%	2.7%	0.9%	2.7%
American Indian/Alaska Native	0.1%	0.3%	0.1%	0.5%	0.1%	0.1%	0.1%	0.2%	0.1%	0.1%
Asian	61.0%	50.3%	46.8%	28.8%	63.6%	55.3%	51.4%	34.0%	70.0%	59.9%
Native Hawaiian/Other Pacific Islander	0.1%	0.0%	0.5%	0.4%	0.0%	0.6%	0.2%	0.1%	0.1%	0.2%
Other	0.5%	0.0%	0.5%	0.0%	0.4%	0.0%	0.5%	0.0%	0.4%	0.0%
Two or More Races	3.4%	2.6%	3.5%	2.9%	3.8%	2.1%	4.1%	4.6%	3.1%	2.0%

* TP – Total Population
** CVAP – Citizen Voting Age Population

► DISTRICT DEMOGRAPHICS

SCENARIO 4



Trustee Area 1 (Cream Color)

- High School Attendance Boundaries
 - Fremont
 - Homestead
 - Cupertino
- Cities
 - Portion of Sunnyvale
 - Portion of Cupertino

Trustee Area 2 (Purple Color)

- High School Attendance Boundaries
 - Fremont
- Cities
 - Portion of Sunnyvale

Trustee Area 3 (Salmon Color)

- High School Attendance Boundaries
 - Homestead
 - Monta Vista
- Cities
 - Small Portion of Sunnyvale
 - South-Eastern Portion of Los Altos
 - South-Eastern Portion of Palo Alto
 - Unincorporated Santa Clara County
 - Portion of Cupertino
 - Portion of Northern Saratoga
 - Small Portion of West San Jose

Trustee Area 4 (Green Color)

- High School Attendance Boundaries
 - Fremont
 - Homestead
- Cities
 - Portion of Sunnyvale
 - Small Portion of Mountain view

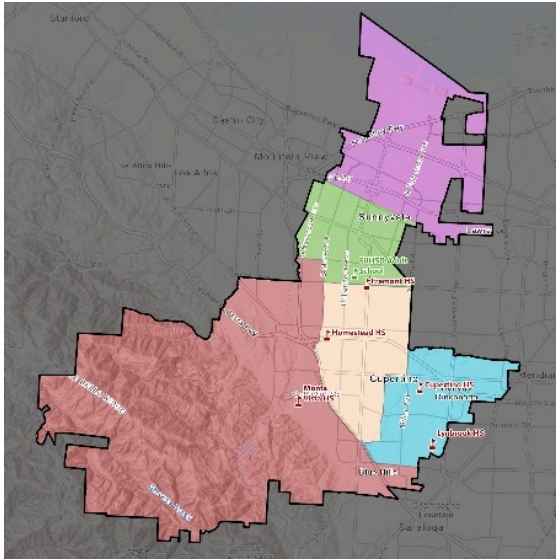
Trustee Area 5 (Blue Color)

- High School Attendance Boundaries
 - Cupertino
 - Lynbrook
- Cities
 - Small Portion of Cupertino
 - Portion of West San Jose
 - South-Western Portion of Santa Clara
 - Portion of Northern Saratoga

Trustee Area	City/Municipality								High School Attendance Boundary				
	Cupertino	Los Altos	Mountain View	Palo Alto	San Jose	Santa Clara	Saratoga	Sunnyvale	Cupertino	Fremont	Homestead	Lynbrook	Monta Vista
Trustee Area No. 1	✓							✓	✓	✓			
Trustee Area No. 2								✓	✓				
Trustee Area No. 3	✓	✓		✓	✓		✓	✓			✓		✓
Trustee Area No. 4			✓					✓	✓	✓			
Trustee Area No. 5	✓				✓	✓	✓		✓			✓	

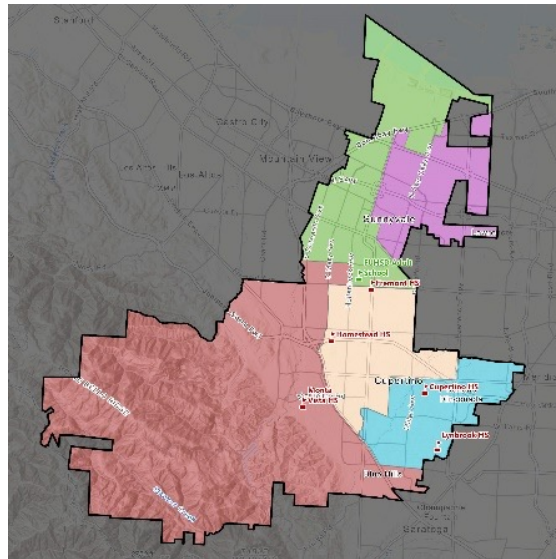
► CONCEPTUAL TRUSTEE AREAS

SCENARIO 1



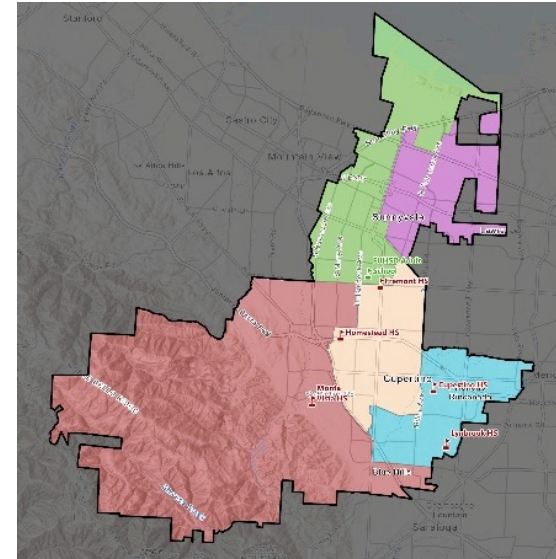
Population Variance 6.1%
Asian CVAP Majority:
Trustee Areas 1, 3, and 5
Hispanic/Latino CVAP in
Trustee Area 2: 26.2%

SCENARIO 2



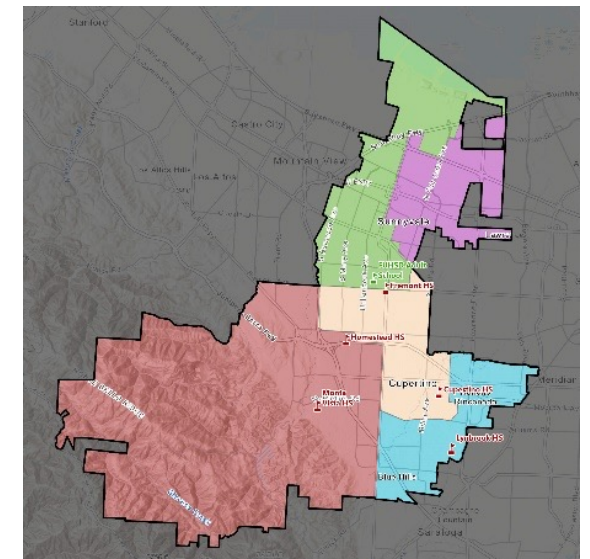
Population Variance: 6.7%
Asian CVAP Majority:
Trustee Areas 1, 3, and 5
Hispanic/Latino CVAP in
Trustee Area 2: 28.4%

SCENARIO 3



Population Variance: 7.4%
Asian CVAP Majority:
Trustee Areas 1, 3, and 5
Hispanic/Latino CVAP in
Trustee Area 2: 28.4%

SCENARIO 4



Population Variance: 6.5%
Asian CVAP Majority:
Trustee Areas 1, 3, and 5
Hispanic/Latino CVAP in
Trustee Area 2: 28.4%

▶ TRUSTEE AREA PROCESS TIMELINE

DATE	ACTIVITY
August 22, 2023	Board Meeting: First Pre-Map Public Hearing and Presentation
September 19, 2023	Board Meeting: Second Pre-Map Public Hearing and Presentation
September – October 2023	Preparation of Preliminary Trustee Area Map Scenarios
October 10, 2023	Post Preliminary Trustee Area Map Scenarios on website
October 17, 2023	Board Meeting: Public Hearing on Preliminary Trustee Area Map Scenarios
October 2023 – February 2024	Phase 2 – Map Development
March-April 2024	Board Meeting: Public Hearing on Focus Trustee Area Map Scenarios Board Meeting: Public Hearing & Board Selection of Trustee Area Map
TBD	County Committee on School District Organization Holds a Public Hearing and Considers Approval of Change in Election Method and Trustee Area Map
TBD	Cooperative Strategies sends Final Trustee Area Map to the County Registrar of Voters
November 8, 2024	First Election Held Utilizing Trustee Areas



QUESTIONS