



▶ **TRUSTEE AREA
PROCESS**

FREMONT UNION HIGH SCHOOL DISTRICT
BOARD OF TRUSTEES

September 19, 2023



**COOPERATIVE
STRATEGIES**
ASSESS • PLAN • FUND • BUILD

▶ PROCESS

PHASE 1 – COMMUNITY OUTREACH & EDUCATION

(Through October 2023)

The first phase consists of community outreach about the process, pre-map hearings, information at pop-up/community events, and a community survey about general mapping preferences.

PHASE 2 – MAP DEVELOPMENT

(October 2023 – February 2024)

The second phase starts with presentation of preliminary maps, public input/map drawing, community workshops, refinement of maps. This phase may also include a broad-based community outreach or committee-based approach.

PHASE 3 – MAP SELECTION

(February – April 2024)

The third phase consists of the Board's consideration of two or three focus maps during Board meetings. It will also include additional outreach efforts and a community survey regarding the focus maps.

COMMUNITY OUTREACH & EDUCATION FOR TRANSITION TO BY-TRUSTEE AREA ELECTIONS

Postcard



All **105,000** residences in the District boundaries received a postcard notifying them of the transition to By-Trustee Area elections and the dedicated webpage where regular updates on the process are posted.

Pop-Up Events



Approx. **750** individuals stopped by FUHSD booths at our Back to School Nights, the Cupertino Fall Festival and other local events. FUHSD has tabled 11 pop-up events to date.

Informational Presentations



FUHSD District staff have been presenting at PTSA, staff and other meetings, sharing the information with approx. **140** individuals. FUHSD will have made 7 informational presentations by the end of this week.

APPROX. 150,000 TOUCH POINTS

Website



The FUHSD Trustee Area website went live at the start of August, with **953** page views to date (www.fuhsd.org/trustee-areas).

Social Media



In early August, FUSHD posted about the kick-off of the Trustee Area process to it's **3,800** followers.

Email Blast



In early August, FUSHD sent an informational email about the Trustee Area process to approx. **30,000** individuals (parents and families).

Media



The San Jose Mercury News ran a story on FUHSD transitioning from At-Large to By-Trustee Areas, with approx. **313,000** daily readership.

▶ PROCESS

OPTIONS FOR PHASE 2

BROAD-BASED COMMUNITY OUTREACH MODEL

The District would focus time and efforts on informing and soliciting information from the entire community. Efforts would include multiple community workshops and community surveys. Maps would be reviewed and narrowed at Board meetings which are noticed and streamed to the community.

COMMITTEE-BASED MODEL

The District would support a community committee which would spreadhead outreach. It would also coordinate meetings to develop maps and narrow maps for final selection by the Board.

COMMON TO BOTH MODELS

The District would provide information and outreach support as well as a mapping tool to allow community members to develop maps. It would also look to implement community surveys to obtain input. Presentation of preliminary maps and the final map selection would take place at a Board meeting.

▶ AB 764

POTENTIAL CHANGES TO DISTRICTING PROCESS

- ❖ *Sets criteria for map boundaries and specifies priority of criteria*
 1. *Contiguous*
 2. *Maintain communities of interest*
 3. *City/census designated places*
 4. *Natural/artificial boundaries*
 5. *Compactness*
- ❖ *Requires agency to determine if it is possible to draw majority-minority district and publish analysis*
- ❖ *Prohibits maps adopted for the purpose of favoring incumbents*
- ❖ *May impose additional requirements on committees*
- ❖ *Imposes additional procedural requirements on public hearings for maps*

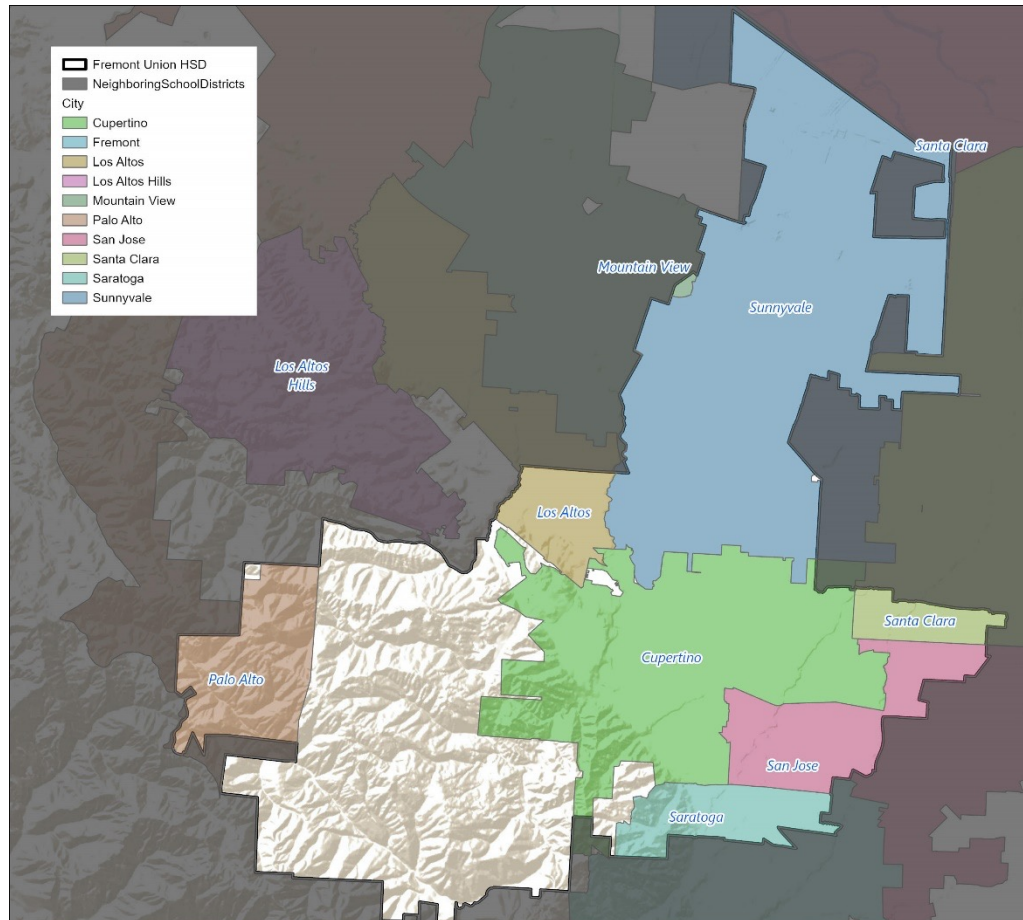
Last day for AB 764 to be signed into law is October 14, 2023.

▶ TRUSTEE AREA PROCESS TIMELINE

DATE	ACTIVITY
August 22, 2023	Board Meeting: First Pre-Map Public Hearing and Presentation
September 19, 2023	Board Meeting: Second Pre-Map Public Hearing and Presentation
September – October 2023	Preparation of Preliminary Trustee Area Scenarios
October 10, 2023 (no later than)	Post Preliminary Trustee Area Scenarios on website
October 17, 2023	Board Meeting: Public Hearing on Preliminary Trustee Area Scenarios
October 2023 – February 2024	Phase 2 – Map Development
March-April 2024	Board Meeting: Public Hearing on Focus Trustee Area Scenarios Board Meeting: Board Selection of Trustee Area Map
TBD	County Committee on School District Organization Holds a Public Hearing and Considers Approval of Change in Election Method and Trustee Area Map
TBD	Cooperative Strategies sends Final Trustee Area Map to the County Registrar of Voters
November 8, 2024	First Election Held Utilizing Trustee Areas

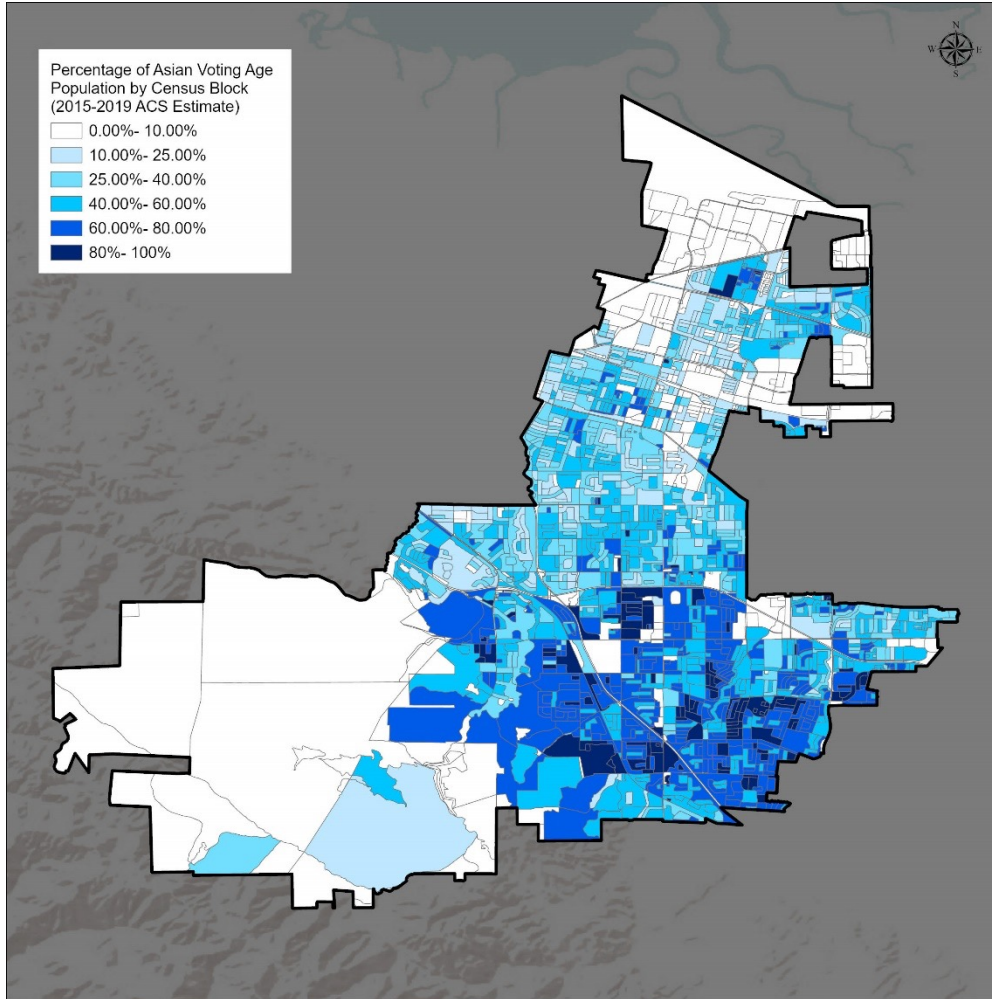
► DISTRICT DEMOGRAPHICS

2020 CENSUS DATA



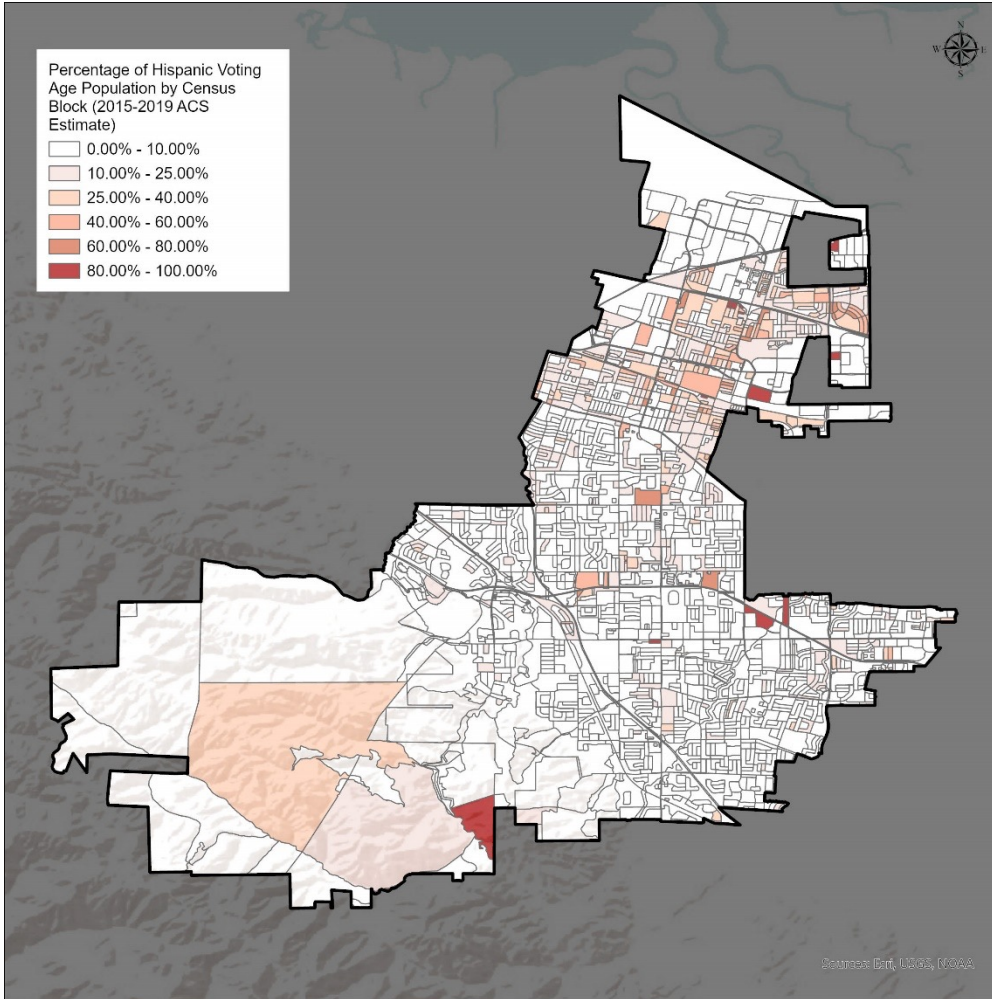
Population	Total Population		Age 18 +	
	Total	%	Total	%
Hispanic/Latino	26,326	10.9%	19,554	10.4%
White	60,823	25.3%	51,831	27.6%
Black/ African American	2,603	1.1%	2,142	1.1%
American Indian/Alaska Native	226	0.1%	137	0.1%
Asian	140,451	58.4%	108,126	57.6%
Native Hawaiian/ Pacific Islander	463	0.2%	371	0.2%
Other	1,163	0.5%	845	0.4%
Two or More Races	8,600	3.6%	4,872	2.6%
Total Population	240,655	100%	187,878	100%

▶ DISTRICT DEMOGRAPHICS
ASIAN CITIZEN VOTING AGE POPULATION ESTIMATES



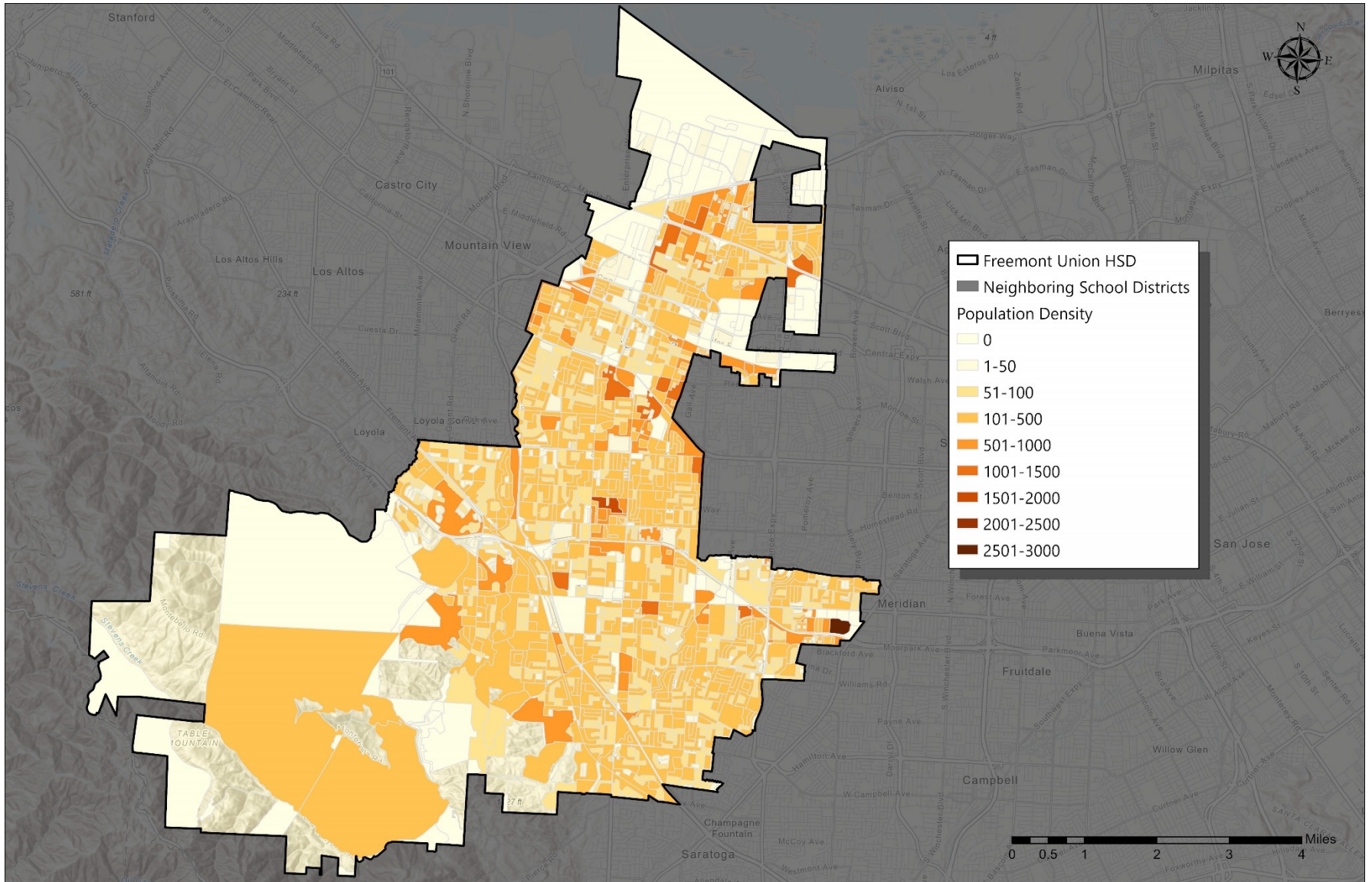
CVAP	2017-2021	
	Total	%
Hispanic/Latino	13,746	11.0%
White	47,525	37.9%
Black/ African American	2,286	1.8%
American Indian/Alaska Native	308	0.2%
Asian	58,037	46.3%
Native Hawaiian/ Pacific Islander	368	0.3%
Two or More Races	3,166	2.5%
Total Population	125,436	100%

► DISTRICT DEMOGRAPHICS
HISPANIC CITIZEN VOTING AGE POPULATION ESTIMATES

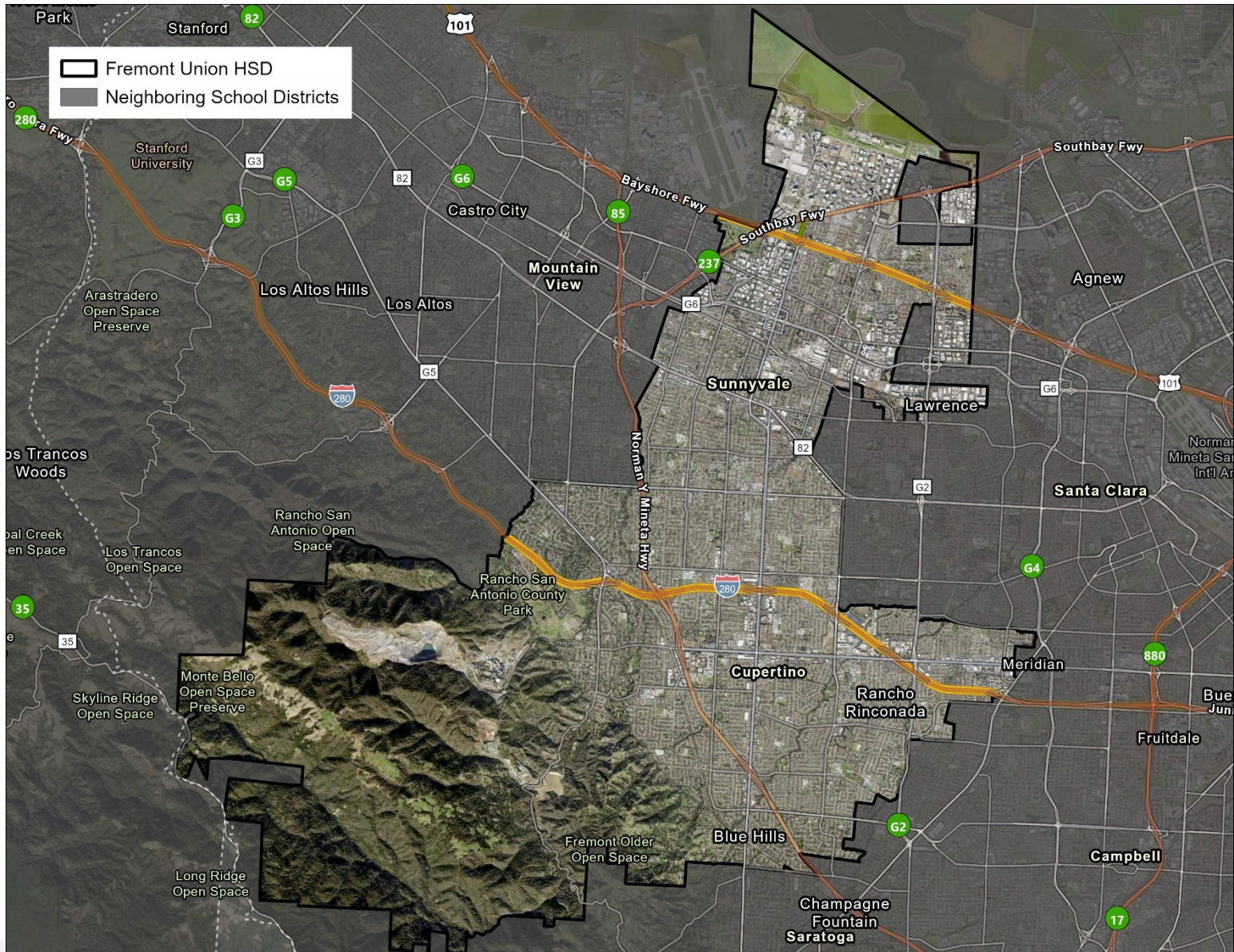


CVAP	2017-2021	
	Total	%
Hispanic/Latino	13,746	11.0%
White	47,525	37.9%
Black/ African American	2,286	1.8%
American Indian/Alaska Native	308	0.2%
Asian	58,037	46.3%
Native Hawaiian/ Pacific Islander	368	0.3%
Two or More Races	3,166	2.5%
Total Population	125,436	100%

► POPULATION DENSITY



▶ HOW SHOULD LINES BE DRAWN?



▶ PRE-MAP PUBLIC HEARING
EXAMPLES OF FEEDBACK FOR MAPPING PROCESS

I think:

- **Norman Mineta Highway...**
- **Bayshore Freeway...**
- **Interstate 280....**

... may make sense as a trustee area boundary because ...

- **It keeps communities together**
- **It provides good representation**



QUESTIONS

COMMUNITY TRUSTEE AREA DISTRICTING COMMITTEE (CTAD)



PRO

- Additional Community Engagement
- Diverse Perspective
- Increase in Transparency
- Avoid Conflict of Interest
- Reduce Perception of Bias



CON

- Increase in Cost
- Administrative Efforts
- Increase of Time

